








Do you aim high?
We will lift you up!

We are among the leading intralogistics companies worldwide, offering a unique portfolio to our customers:
From conventional forklift trucks to fully automated logistics systems.

Join **JUNGHEINRICH** International Graduate Program for our Romanian organization!

 JH AG  Romanian, English  Romania and others  Mobile  2023 - 2024

As a trainee in the Jungheinrich International Graduate Program (JIG Program), you will master challenging tasks and develop your leadership and management skills, both at your home base and abroad. You will engage yourself in the world of intralogistics, get to know Jungheinrich with its international trainee community and explore diverse opportunities. Thanks to an individual, structured development path and support from all sides, the JIG Program will enable you to jump right into your successful career.

What you can expect

- A 24-month graduate program, tailored to your needs.
- Group-wide assignments, in your country and abroad.
- A large variety of tasks in the day-to-day business, including interdisciplinary project work.
- Supervision and support by a mentor from the Top Management Team.
- Specific technical qualifications and personal development.
- JIG networking events.

Your profile

- Newly graduated in Business Administration, IT, Economic Sciences, Industrial Engineering or Mechanical Engineering (BSc or MSc), with min. 9 mark at the final exam.
- Fluent Romanian and English. German and any other language will be a plus.
- Ideally - intercultural experience (e.g., former internships abroad).
- Mobility, commitment, proactive approach, creativity, and strong inner motivation.
- Great communication skills and team spirit.

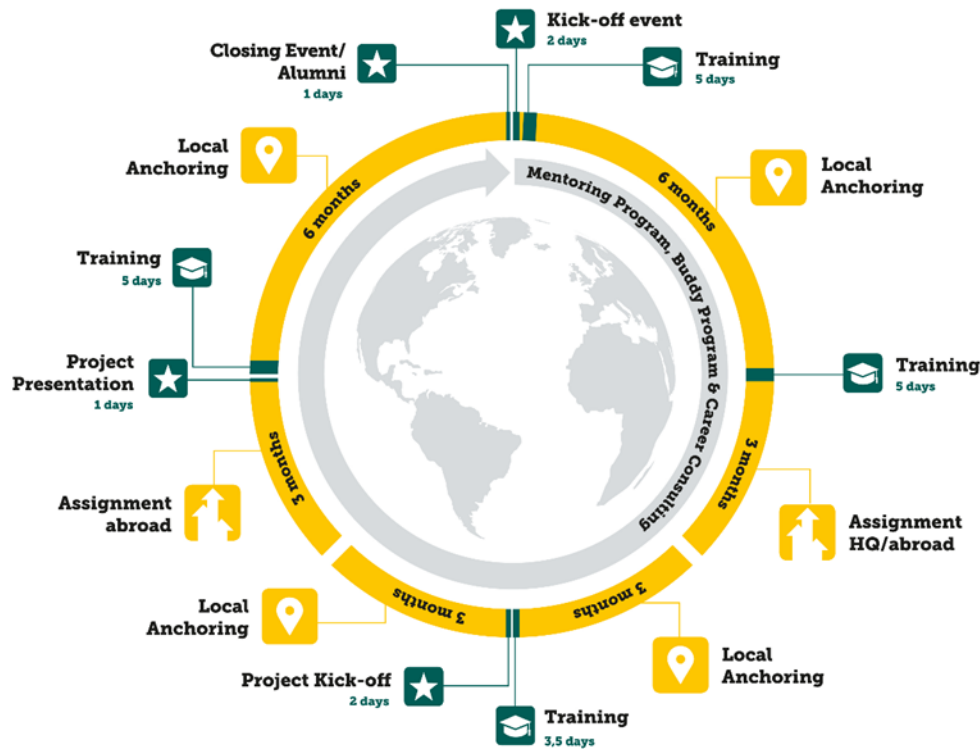
Your main benefits

- Guided career development.
- Intensive training in Romania and abroad.
- International exposure. Learn from the best!
- Multiple career opportunities after successful graduation.

Join our YELLOW TEAM!

Send us your CV by 28th of September, at:
cristina.musa@jungheinrich.ro
maria.lupu@jungheinrich.ro

Jungheinrich International Graduate Program



You are not alone - we will guide you through the entire process!



Career Sponsor

- A Sponsor is the person who requests the JIG and is responsible to accompany and advise the JIG along the learning journey.



Mentor

- Mentors are selected by the HR Department.
- A mentor will be viewed as a more experienced member of the staff, who is willing and able to pass on the benefit of that experience.
- A Mentor is a role model & career coach, a facilitator & counsellor, and a catalyst & door opener.



Buddy

- A Buddy is a current or former JIG trainee who welcomes the “freshener”, shares his/her experience, and advises the JIG. A Buddy is comparable to an informal Mentor.