



Modern Slavery and Human Trafficking Statement.

Jungheinrich Lift Truck Finance Limited

 **JUNGHEINRICH**

Company statement

This statement is made pursuant to s.54(1) of the Modern Slavery Act 2015 and summarises the steps that Jungheinrich Lift Truck Finance Limited ('JLTF') has undertaken, and is continuing to take, to ensure that modern slavery or human trafficking is not taking place within its business or supply chain.

Introduction

Modern slavery is a crime and a violation of fundamental human rights. JLTF has a zero tolerance approach to any form of modern slavery and is committed to preventing slavery and human trafficking in its activities and to ensure that its supply chain is free from slavery and human trafficking.

Organisational Structure and Supply Chain

JLTF specialises in the purchasing, financing and hiring of MHE equipment in the UK and has a turnover in excess of £36m per annum. JLTF's supply chain is limited to inter-company purchasing and financing arrangements with other Jungheinrich companies in the UK and re-financing arrangements with external financiers and banks based in the UK and Germany.

Policies

JLTF is committed to ensuring that there is no modern slavery or human trafficking in its supply chain or in any part of its business. JLTF adopts a number of internal policies of its sister company Jungheinrich UK Limited to ensure it conducts its business in an ethical manner, including its modern slavery policy, which applies to all employees, agency workers, seconded workers, interns, agents, contractors, external consultants, third party representatives and all other business partners.

Suppliers

JLTF is committed to operating its business with the highest standards of ethics and integrity and expects the same high standards from all of its suppliers and business partners. JLTF requires all suppliers to comply with its modern-slavery policy and to have suitable anti - slavery and human trafficking policies and processes within their businesses.

Due Diligence

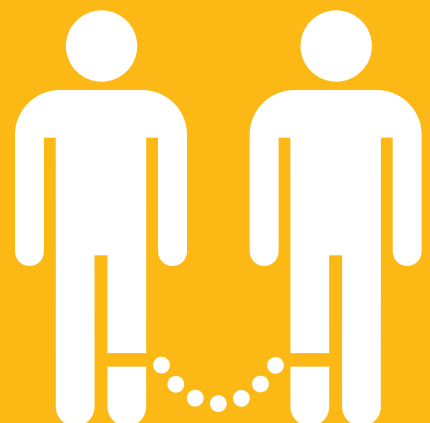
JLTF does not consider that it operates in a high risk sector. Nevertheless JLTF will continually monitor its supply chain in accordance with it's policies. In the event that JLTF becomes aware of a case of modern slavery occurring within its supply chain, JLTF will work with the supplier to implement remedial action.

Training

JLTF provides training to relevant members of staff so that they are aware of the issues surrounding modern slavery and what to do if they suspect that it is taking place within its supply chain. JLTF activities are carried out by employees of Jungheinrich UK Limited which charges a management fee for these services. As such JLTF has no directly employed staff.

This statement has been approved by JLTF's Board of Directors on 12th June 2023 and constitutes JLTF's slavery and human trafficking statement for the financial year ending 31st December 2022.

Silke Herrera Jarama
Director - Jungheinrich Lift Truck Finance Limited



Jungheinrich UK Ltd

Sherbourne House
Sherbourne Drive
Tilbrook
Milton Keynes
MK7 8HX
Telephone 01908 363100
Fax 01908 360180

info@jungheinrich.co.uk
www.jungheinrich.co.uk

