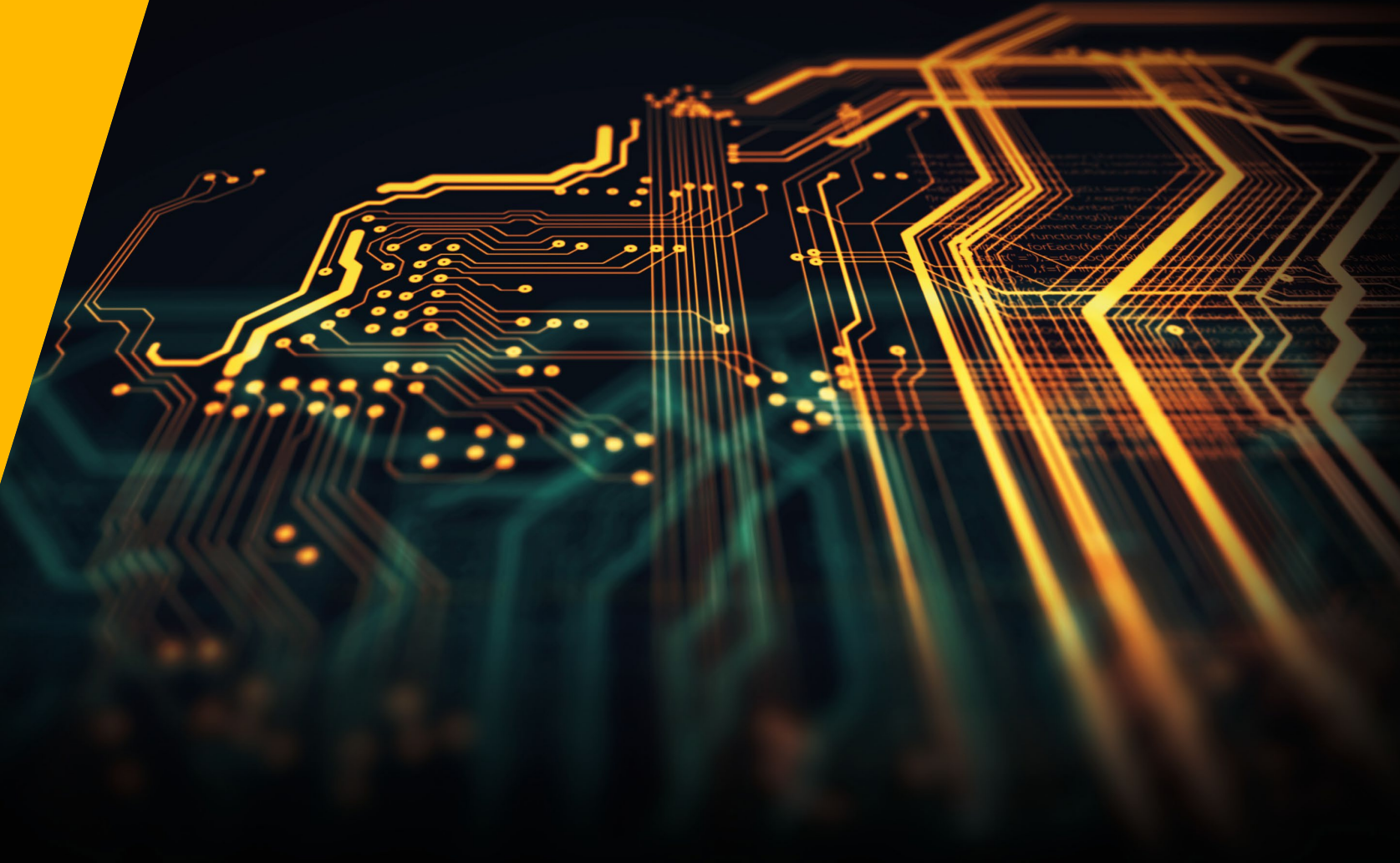





# Capital market presentation

Hamburg, June 2025





# Agenda

1

Jungheinrich at a glance

2

Key figures Q1 2025

3


Strategy 2030+

4

Outlook

5

Additional information



# Agenda

1

Jungheinrich at a glance

2

Key figures Q1 2025

3

Strategy 2030+

4

Outlook

5

Additional information

# Status quo 2024



**Incoming orders** (€5.3 billion) and **revenue** (€5.4 billion) in line with expectations



Continued **focussed implementation of Strategy 2025+**



**EBIT return on sales** 8.1%



**Successful** post-merger integration of **Storage Solutions** and **Magazino**



**Free cash flow** increased to €431 million



Expansion of production in **new plant in Czechia**

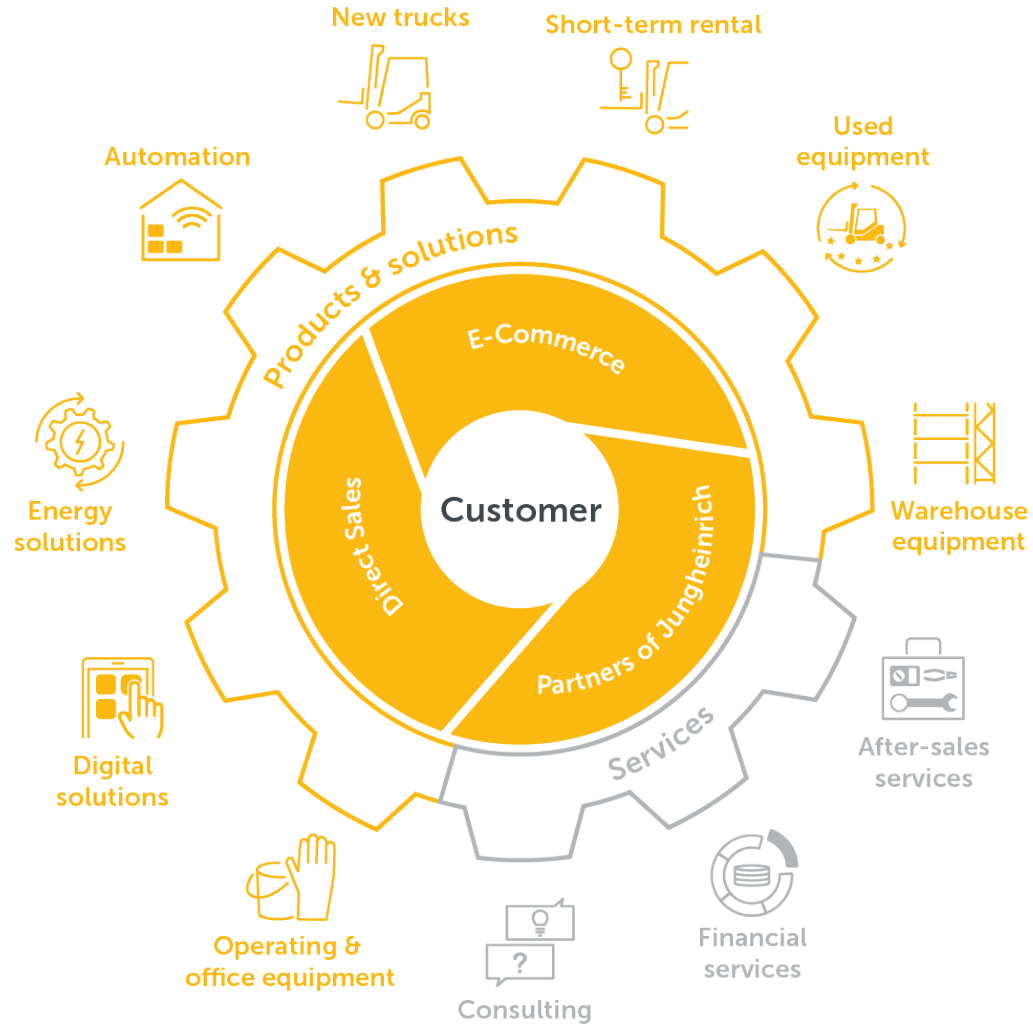


**Record dividend** of **€0.80** per preferred share



**Expansion of nearshoring** organisation **driven forward**

# Integrated, resilient business model



**Customer centricity –**  
all services from a single source

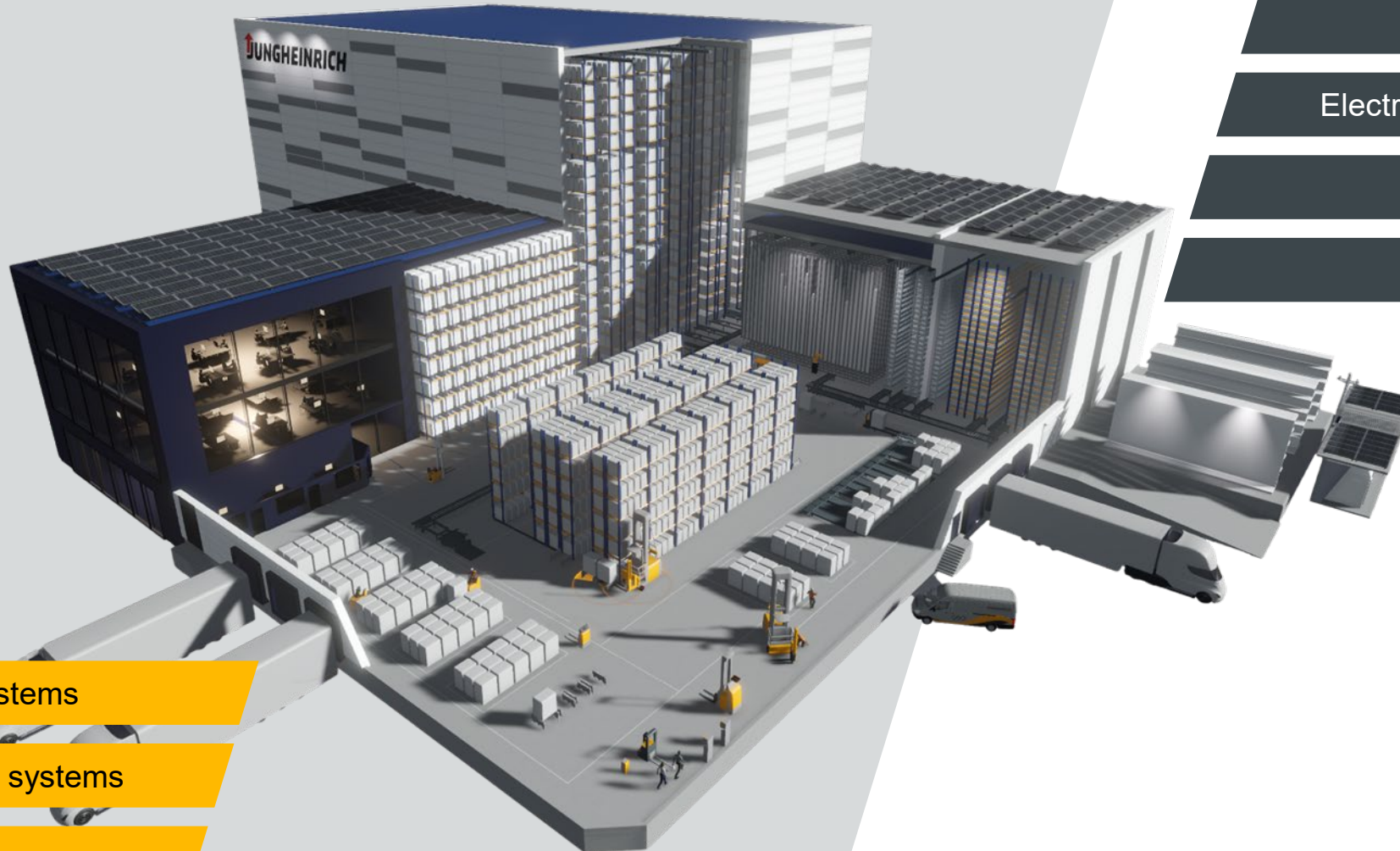
**One-brand strategy –** Jungheinrich stands for quality across the entire product and service spectrum

Comprehensive, complete **life cycle management**

**Measurable added value** and **tailored solutions** for the customers



# Complete solutions for warehouse logistics



Warehousing equipment

Electric counter-balanced trucks

Energy systems

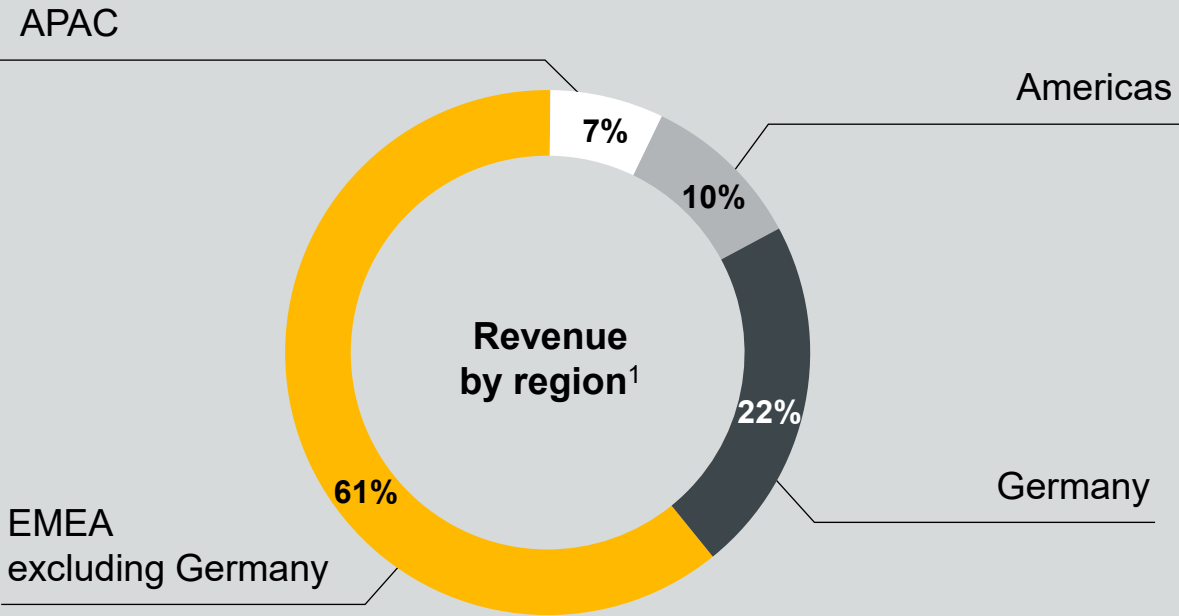
Warehouse equipment

Fully automated systems

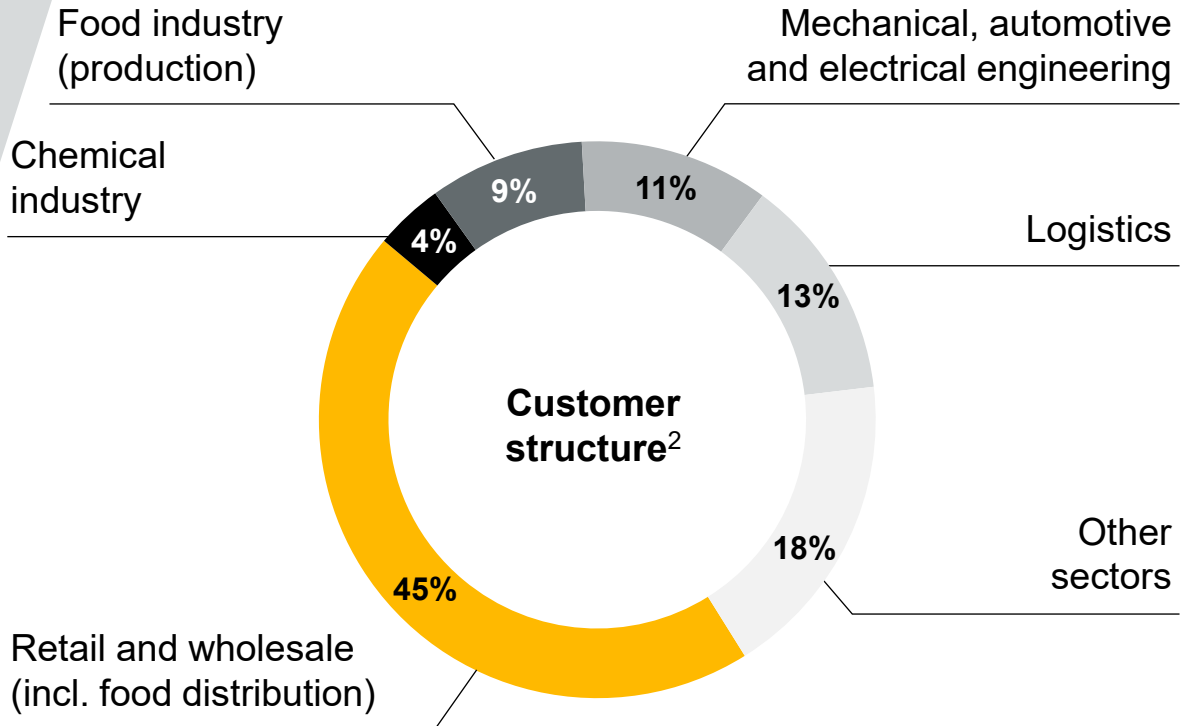
Partially automated systems

Manual systems

# Strong position in Europe, balanced customer structure



<sup>1</sup> in FY 2024, total: €5,392 million




<sup>2</sup> Customer structure based on incoming orders (units) in FY2024

# Jungheinrich is one of the world's leading solutions providers for the intralogistics sector

1	<b>TOYOTA</b> MATERIAL HANDLING	<b>DAIFUKU</b> Always an Edge Ahead	6
2	<b>KION</b> GROUP	 <b>HYSTER-YALE</b> MATERIALS HANDLING	7
3	 <b>JUNGHEINRICH</b>	<b>Honeywell</b>	8
4	<b>CROWN</b>	<b>HELI</b>	9
5	<b>Logisnext</b>	<b>KN</b>  <b>APP</b>	10

Sources: Top 20 Lift Truck Suppliers 2024 – Modern Materials Handling; Top 20 Systems Suppliers 2023 – Modern Materials Handling; annual reports





# Agenda

1

Jungheinrich at a glance

2

Key figures Q1 2025

3

Strategy 2030+

4

Outlook

5

Additional information

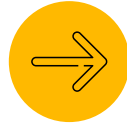
# Q1 2025: At a glance



**Economy subdued**, geopolitical risks high



**Business performance remains robust** in a persistently **difficult** market environment



**Incoming orders** of €1,386 million and **revenue** of €1,305 million **in line with expectations**



**EBIT** reaches €104.5 million with an **EBIT ROS** of 8.0 per cent



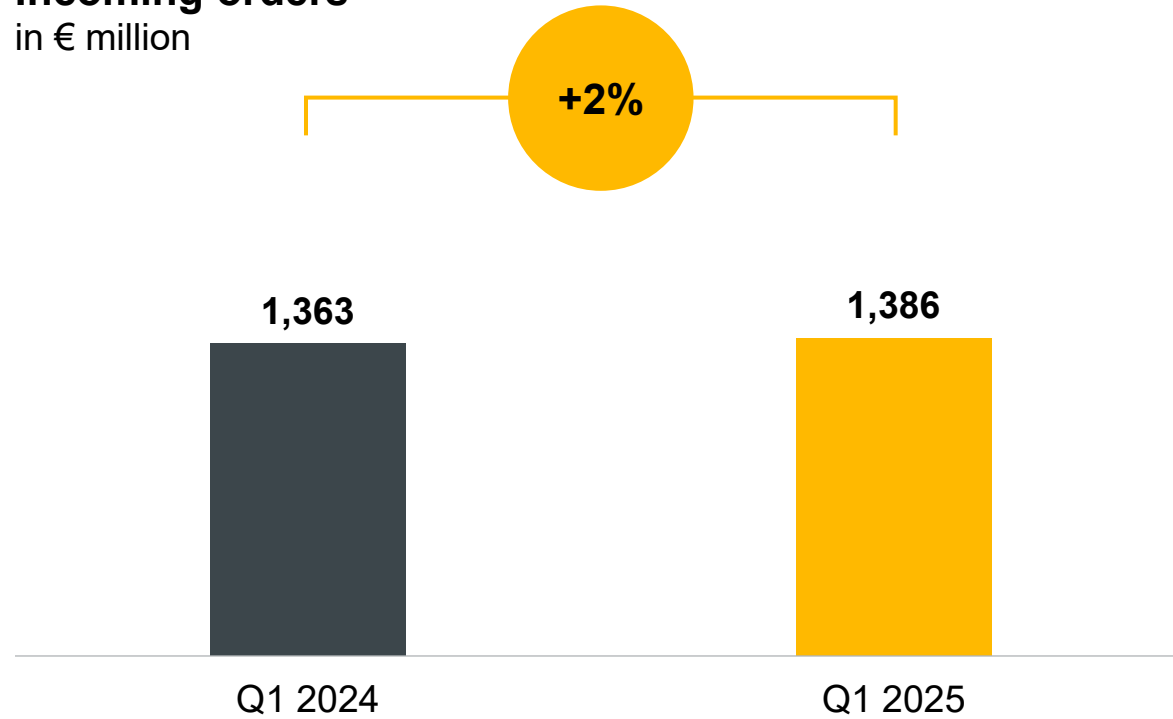
**Free cash flow** of €16 million shaped by working capital development



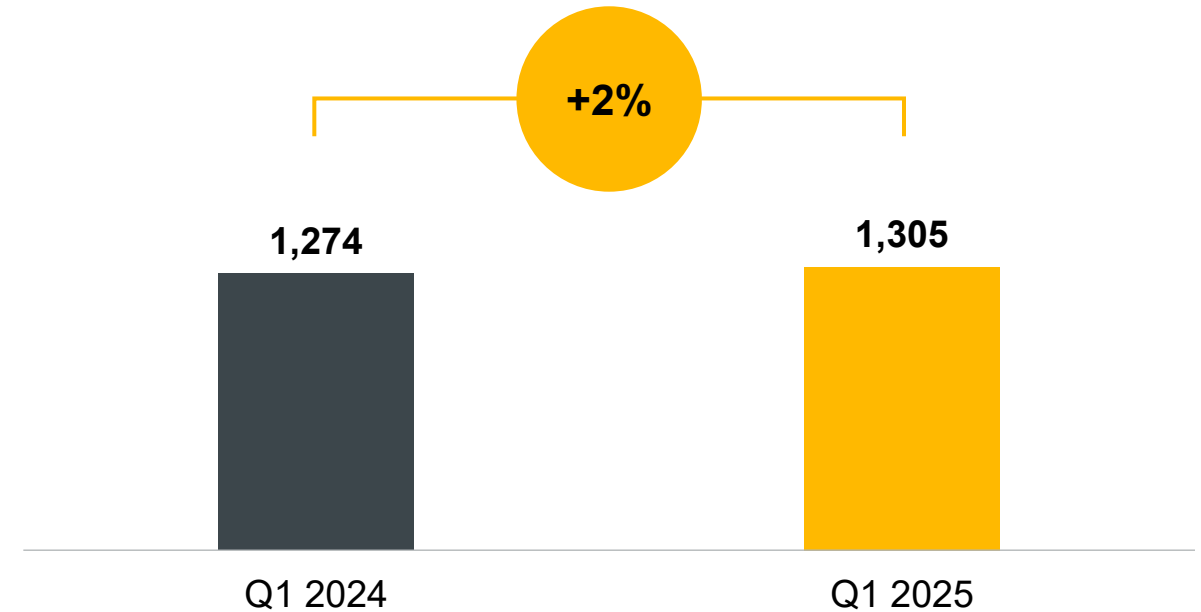
**Forecast** for 2025 **unchanged**

# Incoming orders and revenue in line with expectations

**Incoming orders**  
in € million



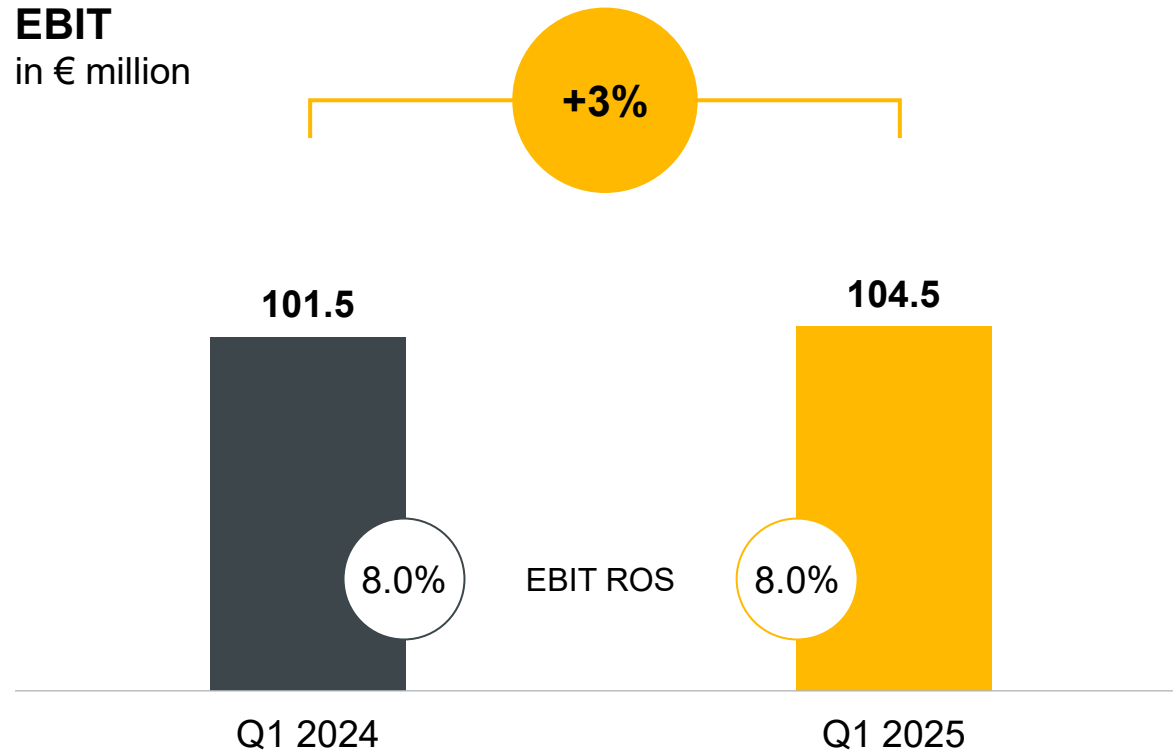
**Revenue**  
in € million



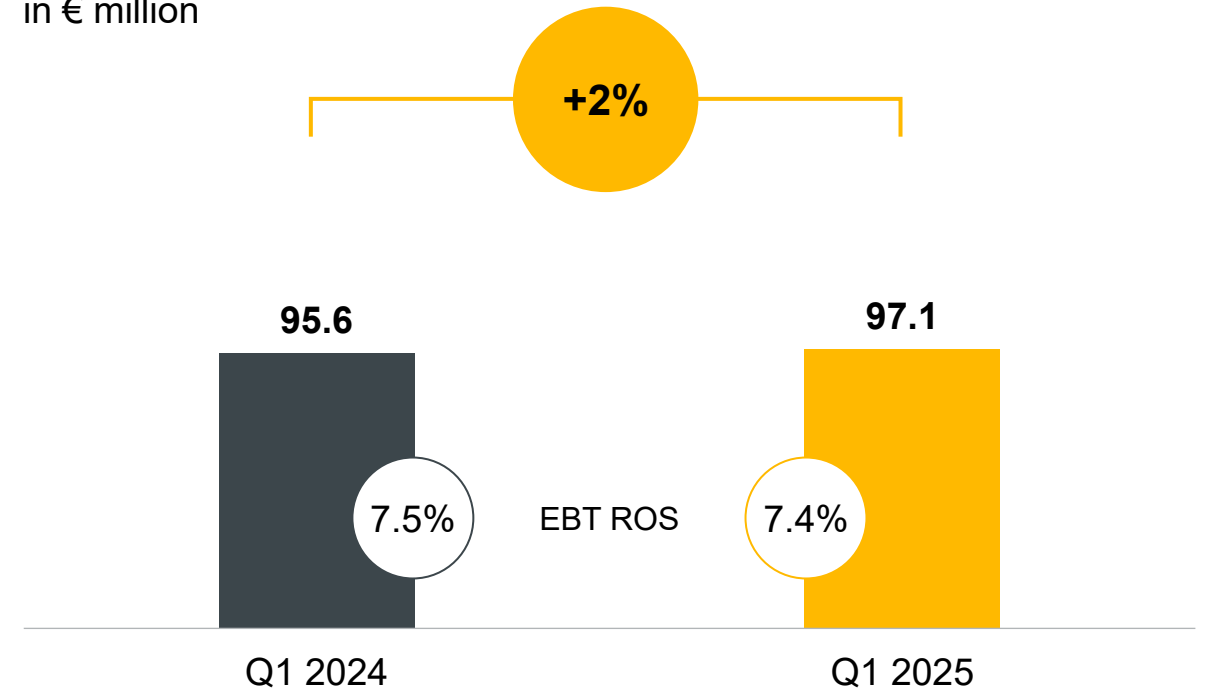
Positive development in new business and in after-sales services

# EBIT and EBT reflect ongoing measures to safeguard earnings

**EBIT**  
in € million

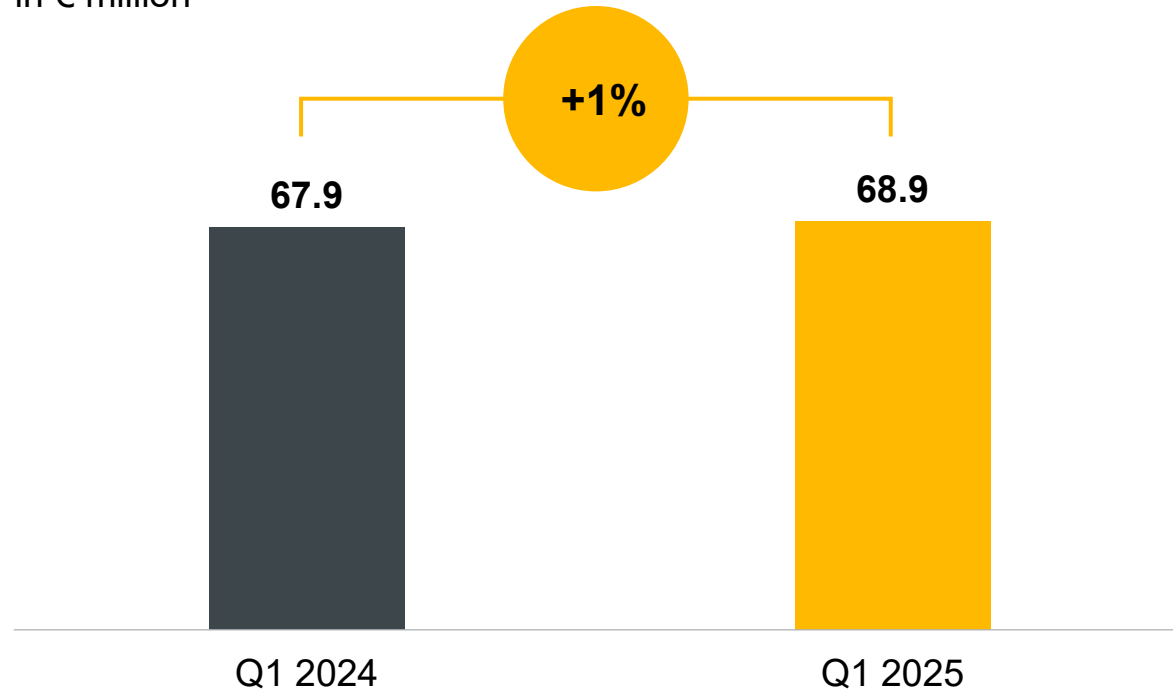


**EBT**  
in € million

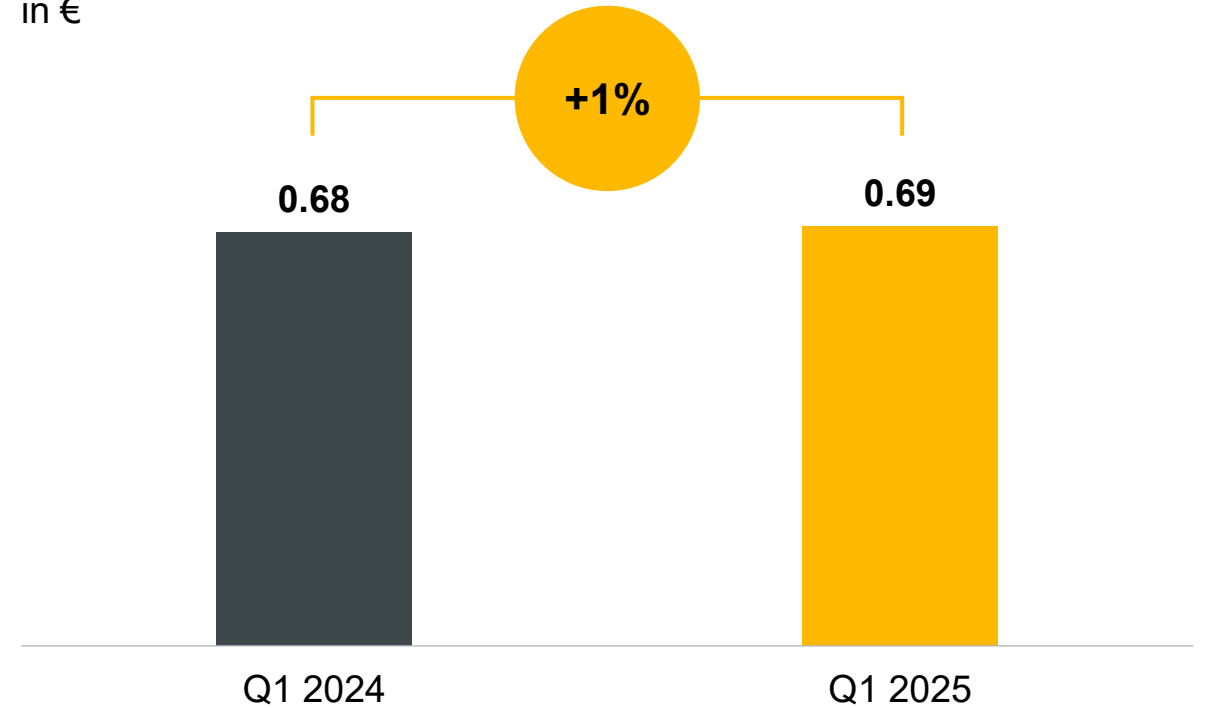


# Profit or loss on a par with previous year

**Profit or loss**  
in € million



**Earnings per preferred share**  
in €





# Agenda

A yellow Jungheinrich automated guided vehicle (AGV) is shown in a warehouse setting, carrying a wooden pallet. The AGV has the Jungheinrich logo on its side. In the background, there are yellow wire mesh cages and other warehouse equipment.

1 Jungheinrich at a glance

2 Key figures Q1 2025

3 Strategy 2030+

4 Outlook

5 Additional information

**CONNECTED  
SOLUTIONS  
THAT FIT.**

**1**

**Where we are today**

2030+  
**STRATEGY**

**SOLUTIONS THAT**

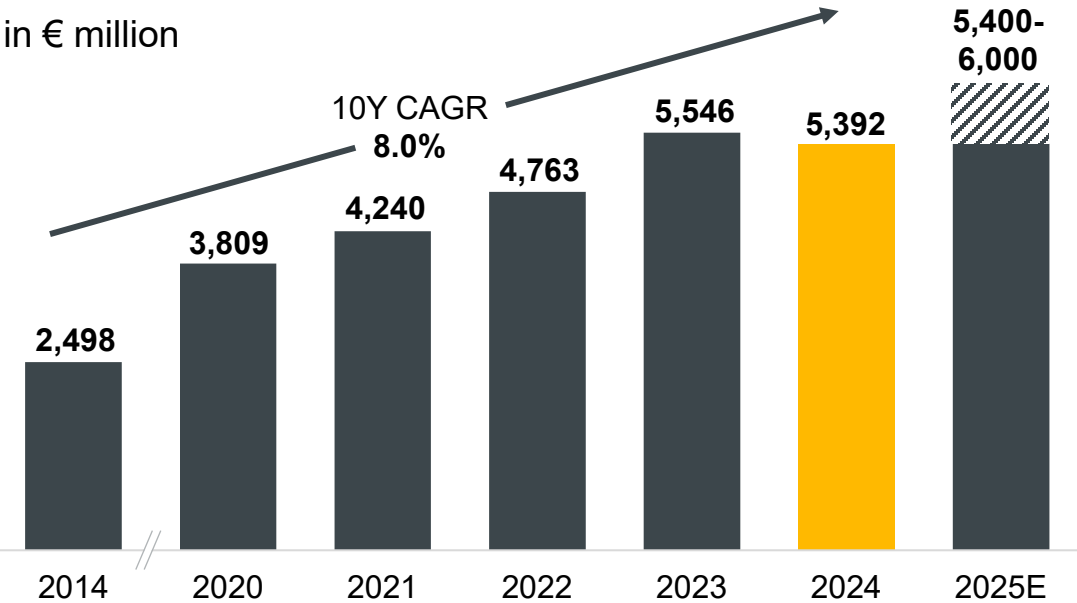
**Material Flow Consulting**

**Automation &  
Digitalization**

# Strong track record of delivering profitable growth and achieving our targets

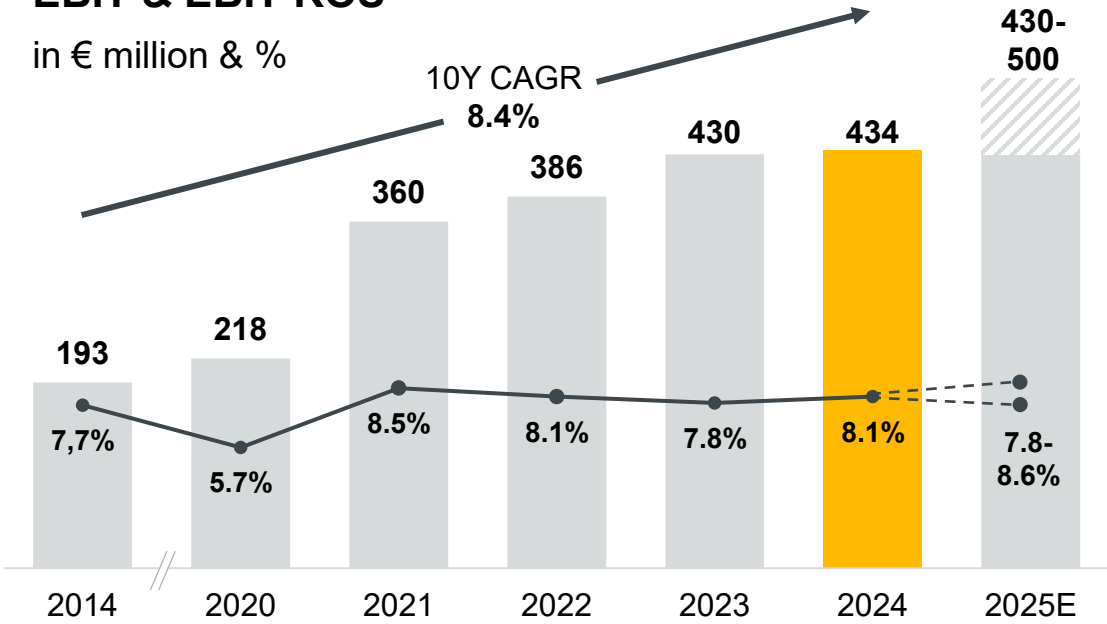
## Revenue

in € million



## EBIT & EBIT ROS

in € million & %



FY 2024

**17.3%**  
ROCE

**€431 million**  
Free Cash Flow

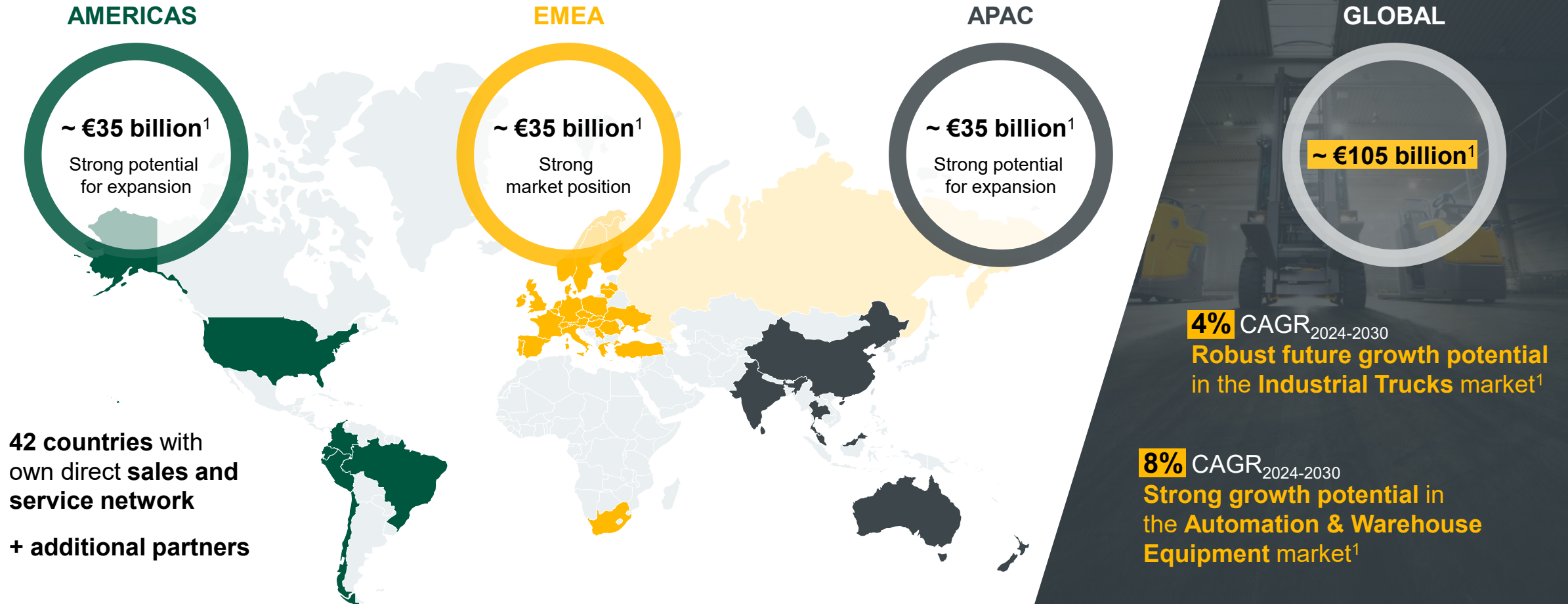
**~ €700 million**  
Financial headroom<sup>1</sup>

**~ 0.0 leverage**  
Net debt<sup>2</sup> / EBITDA

**€0.80**  
Dividend

<sup>1</sup> Liquid funds and securities    <sup>2</sup> Net indebtedness = Financial liabilities (excl. liabilities from financial services) – Cash and cash equivalents and securities

# We are operating in a large and attractive global growth market



<sup>1</sup> Based on external market reports (Interact Analysis); revenue incl. services and software (Global Forklift Market Report Nov. 2024 (growth in units); Warehouse Automation Report Nov. 2024; Warehouse Pallet Racking Model Dec. 2024)



# We have built a solid foundation to capitalise on the opportunities ahead

## Highlights complementing our strong core business of industrial trucks & services:

### Global Footprint



Acquisition of Storage Solutions ✓

Expansion of direct sales in New Zealand ✓

### Innovation & Technology



Strong rise in demand for compact POWERLINE trucks ✓

100% electric vehicle production ✓

Further development of the digital fleet management system ✓



### Automation

✓ Acquisition of robotics specialist Magazino & significant new flagship projects

✓ Acquisition of arculus & broadening of customer base for mobile robots



### Profitability

✓ Implementation of our efficiency program DEEP (Digital End-to-End Processes) according to plan

✓ New production plant in Czechia

✓ Expansion of Business Service Centers



# Market trends present significant opportunities & challenges in the coming years

Ongoing growth in demand for material handling solutions

Automation as the key driver of the future warehouse & production

Increasing impact of new, disruptive technologies

Growth of competitive landscape

Rise of the Mid-Tech segment

Glocalisation driven by geopolitical factors

Sustainability as a strategic imperative



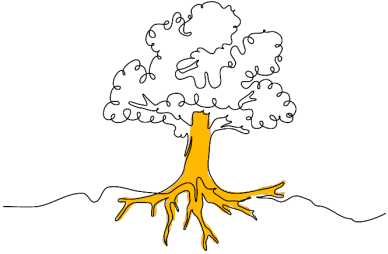
# 2

## Strategy 2030+: Our path ahead

2030+  
**STRATEGY**

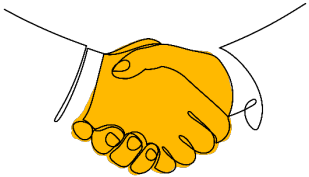


# Our four pillars: Guiding us on the path ahead



## VISION

Built on strong roots, we transform into a truly global partner, delivering material handling solutions of exceptional value.



## MISSION

Passionately empowering our customers to keep their promises.



## PURPOSE

Connecting people and goods for a world in motion.



## PEOPLE & CULTURE

We work the **J**ellow Way.  
We are open, active, efficient & we care!



**A clear destination:  
We will become a 10|10 company**

**Revenue**

**€10  
billion**

**10%**

**EBIT ROS**

Targets based on organic growth



# Focusing on four defined Strategy 2030+ action fields

## VISION

Built on strong roots, we **transform** into a **truly global partner**, delivering material handling solutions of **exceptional value**.



### Global Expansion

Truly global



### Automation

One of the leading automation players



### Portfolio Extension

Diversified business for future growth

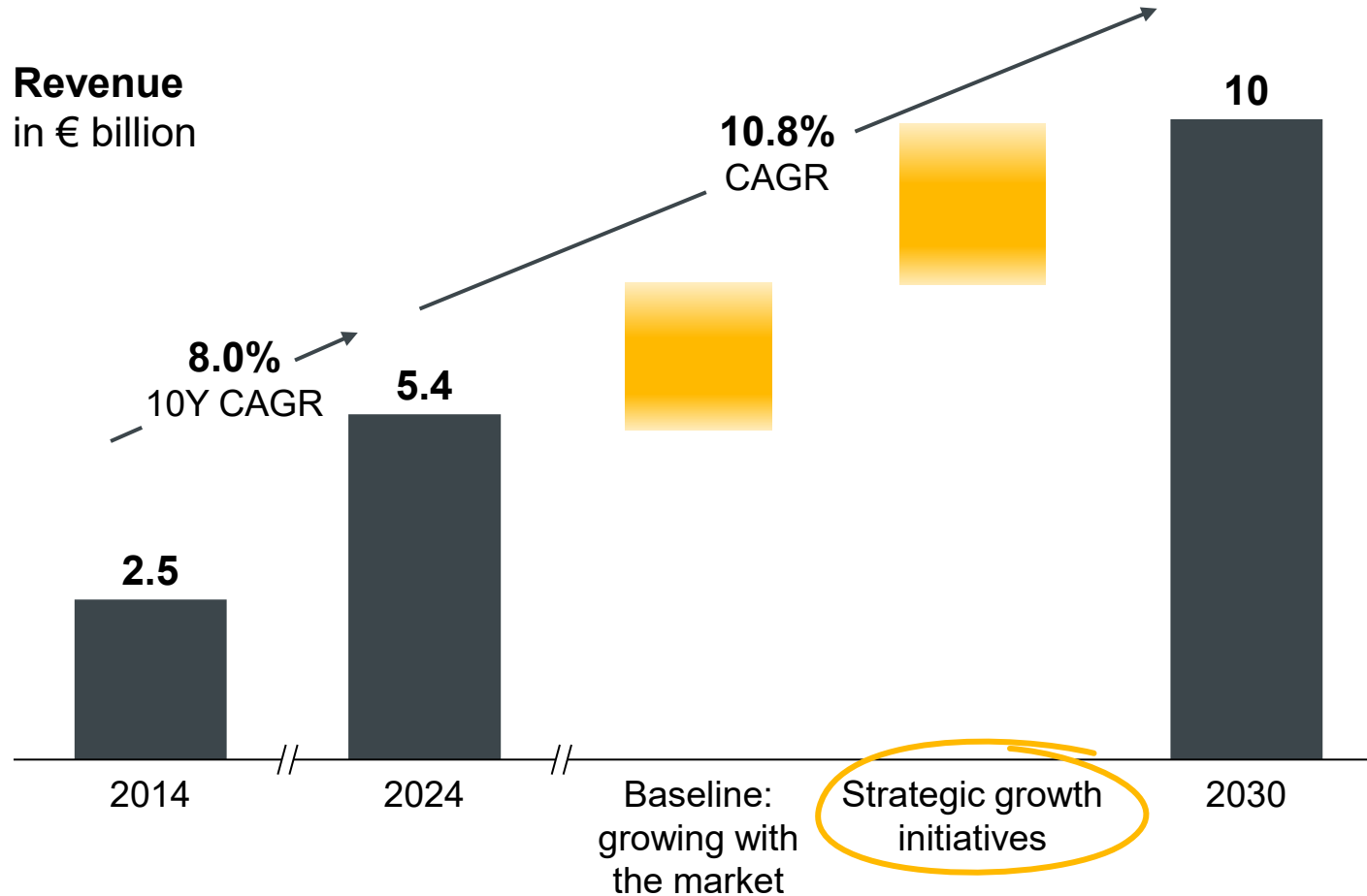


### Transformation

Best-in-class productivity and sustainability



# Growth priorities to continue outperforming the market



 Based on the external assumption of normalizing markets until 2030<sup>1</sup>

<sup>1</sup> Interact Analysis market reports, Nov. 2024; growth expectations see next page

## Our growth formula

expansion of channels and global reach



extension of integrated portfolio offering



access to broad customer base and installed base









passion of our team members



# Global Expansion: Significant opportunities in regions experiencing faster growth than Europe

Expected market growth<sup>1</sup>  
CAGR 2024-2030

Jungheinrich ambition

North America		5%	Growth significantly above market	STRATEGIC GROWTH REGIONS
		8%		
APAC		5%	Growth significantly above market	
		7%		
Europe		4%	Forceful growth above market	
		7%		



<sup>1</sup> Based on external market reports (Interact Analysis); revenue incl. services and software (Global Forklift Market Report Nov. 2024 (growth in units); Warehouse Automation Report Nov. 2024; Warehouse Pallet Racking Model Dec. 2024)





# Global Expansion: Become truly global by driving expansion in North America and APAC

## OBJECTIVE 2030

Develop North America into the second core market alongside Europe & become a leading market player for material handling in APAC

### North America

- **Increasing market penetration** for industrial trucks
- **Expanding Automation & Warehouse Equipment** business, esp. based on our strong Storage Solutions platform
- **Driving** additional **growth** through **M&A**

### APAC

- **Expanding regionally in key markets** and **entering new selected markets**
- Extending **sales channels** through **dealers** and **online platforms**
- Establishing a **regional hub for APAC** and **new Business Service Centers** in two key markets







# Global Expansion: Additional M&A activities with a strategic focus on North America and APAC

Europe	North America	APAC
Opportunistic	Strategic Focus	



To become truly global, we are committed to achieve **additional > €1 billion revenue** through M&A outside Europe, on top of our organic growth

Clear criteria for M&A

Enhancement of market presence

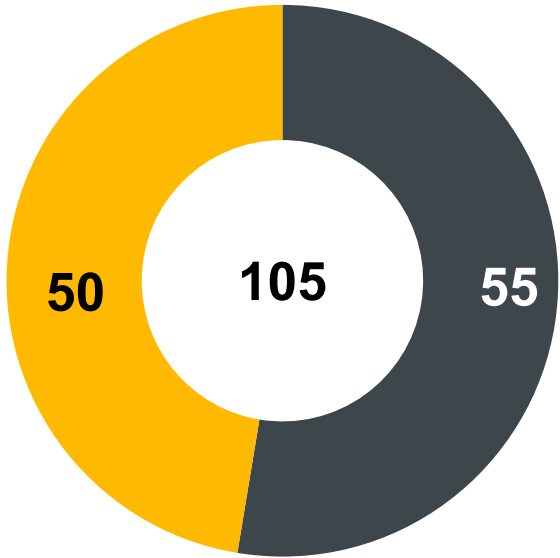
Build upon synergy effects

Ensure culture-fit



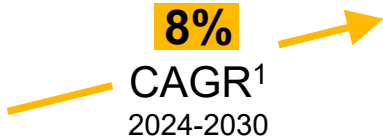
# Automation: In a growing automation market, our broad portfolio of material handling solutions puts us in a unique position

Market volume (2024)<sup>1</sup>  
in € billion



- Automation & Warehouse Equipment
- Industrial Trucks & Services

Automation & Warehouse Equipment<sup>1</sup>



## What customers in the market are looking for...

Set-ups that seamlessly integrate industrial trucks, mobile robots and ASRS in an efficient and user-friendly way

## How we can differentiate ourselves from the competition...

By offering fully integrated solutions from a single source – delivering unmatched value and impact for our customers

<sup>1</sup> Based on external market reports (Interact Analysis); revenue incl. services and software (Global Forklift Market Report Nov. 2024; Warehouse Automation Report Nov. 2024; Warehouse Pallet Racking Model Dec. 2024)





# Automation: We aim to be one of the world's leading players by 2030

## OBJECTIVE 2030

Be a trusted partner by providing fully integrated & connected warehouse and production material flow solutions

### Best-in-class portfolio for material storage & transport

- Optimising our portfolio to support customers in **transitioning from manual to automated**
- Enhancing **customer centricity** by involving customers early in co-developing new solutions

### Fully integrated & connected software

- **Connecting and integrating various material flow solutions** from Jungheinrich and partners – using standardised software modules

### First-in-class service & support

- Maintaining **first-in-class service on-site and remote** to ensure 24/7 operations of critical applications for customers

JUNGHEINRICH







# Automation: We are already a proven partner for successful integrated customer solutions & system complexities



**12 SOTO**  
for production supply



**8 EKXa & 14 arculee S**  
for automated storage and transport







# Automation: Additional M&A activities will be a key component of the strategic action field



**Technology**

**Software**

**Mobile Robots**

**Clear criteria for M&A**

**Enhancement of market presence**

**Build upon synergy effects**

**Ensure culture-fit**



# Portfolio Extension: Accelerating growth

**Full-liner truck portfolio:  
the right truck for every customer**

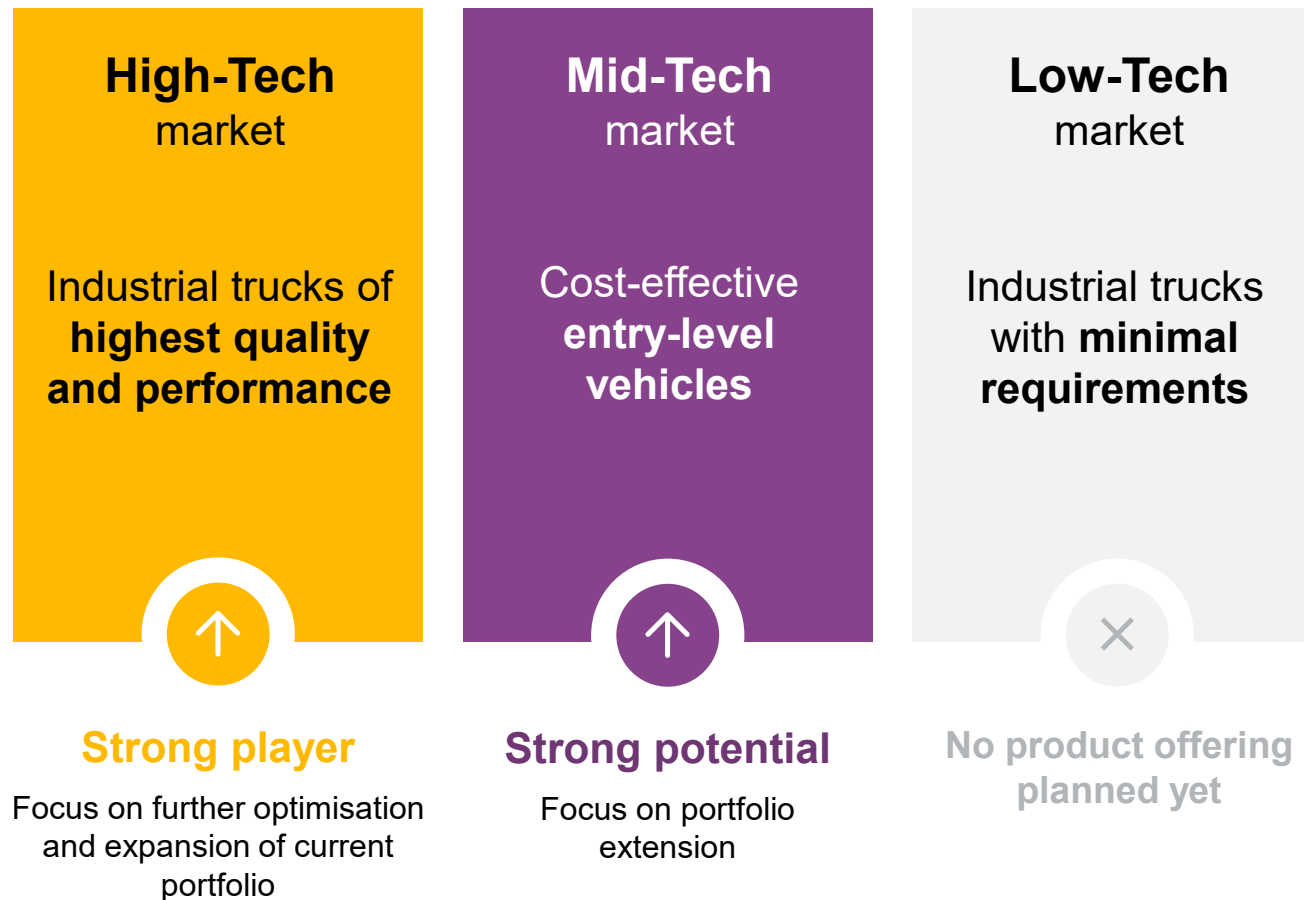
Introducing a new Mid-Tech portfolio  
Optimising High-Tech portfolio

**Invest in new businesses  
beyond our current core**

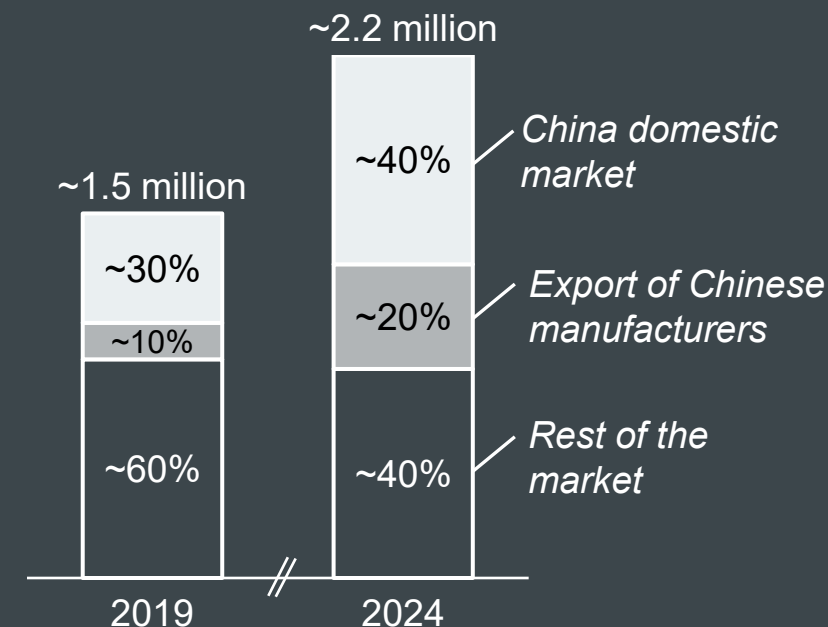
**uplift**  
Ventures



## Portfolio Extension: Mid-Tech industrial trucks represent an attractive growth market



Global industrial trucks market<sup>1</sup>



**Fast-growing Mid-Tech market,** increasingly served by Chinese suppliers

<sup>1</sup> Based on WITS & Chinese export statistics, order intake in units



# Portfolio Extension: Strategic partnership to shape the future of material handling together



Jungheinrich and **EP Equipment** have agreed on a **strategic partnership**

## Combined strengths for more customer value

- **Jungheinrich** as the **trusted partner** of customers worldwide, with an exceptional **direct sales and service network**
- **EP Equipment** as leading player for **lithium-ion industrial trucks**
- **Combining the strengths** of both companies to enhance **efficiency, productivity** and **sustainability** in material handling operations **globally**

## Key partner for full-liner truck portfolio

- **EP Equipment** as **key partner** for Jungheinrichs **Mid-Tech portfolio extension**
- Starting in 2025, EP will **supply Jungheinrich** with **Mid-Tech industrial trucks**
- **Additional partnership opportunities** will be explored over time



&

**Shaping the Future  
of Material Handling  
Together**





# Portfolio Extension: Introducing our new Mid-Tech portfolio

- ▶ **Our new Mid-Tech portfolio** – clearly differentiated through a new brand, a new look & feel and a distinct Mid-Tech service offering
- ▶ Offered at **competitive prices**, with choice of services and backed by our established brand.
- ▶ Sales will follow a **multi-channel approach** (dealer, e-commerce, direct) with the right routes to market per region & per product
- ▶ Starting with **counterbalanced and warehouse trucks** in 2025

anton  
BY JUNGHEINRICH

made to rely on.



Exemplary product mock-ups





# Portfolio Extension: New businesses for future growth



As Jungheinrich's **Corporate Venturing Unit**, **Uplift Ventures** shapes the future of moving goods & creates new businesses beyond today's core

- February 2025 – Start of ***Uplift Ventures*** (separate Jungheinrich subsidiary)
- **Building and scaling** of innovative start-ups, with the first venture projects underway
- Further strengthening of our **partnership with High-Tech Gründerfonds**
- **Investments** in additional **venture capital funds** (e.g. Merantix)

## Strategic search fields



Robotics & automation

AI

AI-supported material flow



Energy solutions



Circular economy



Digital platform solutions

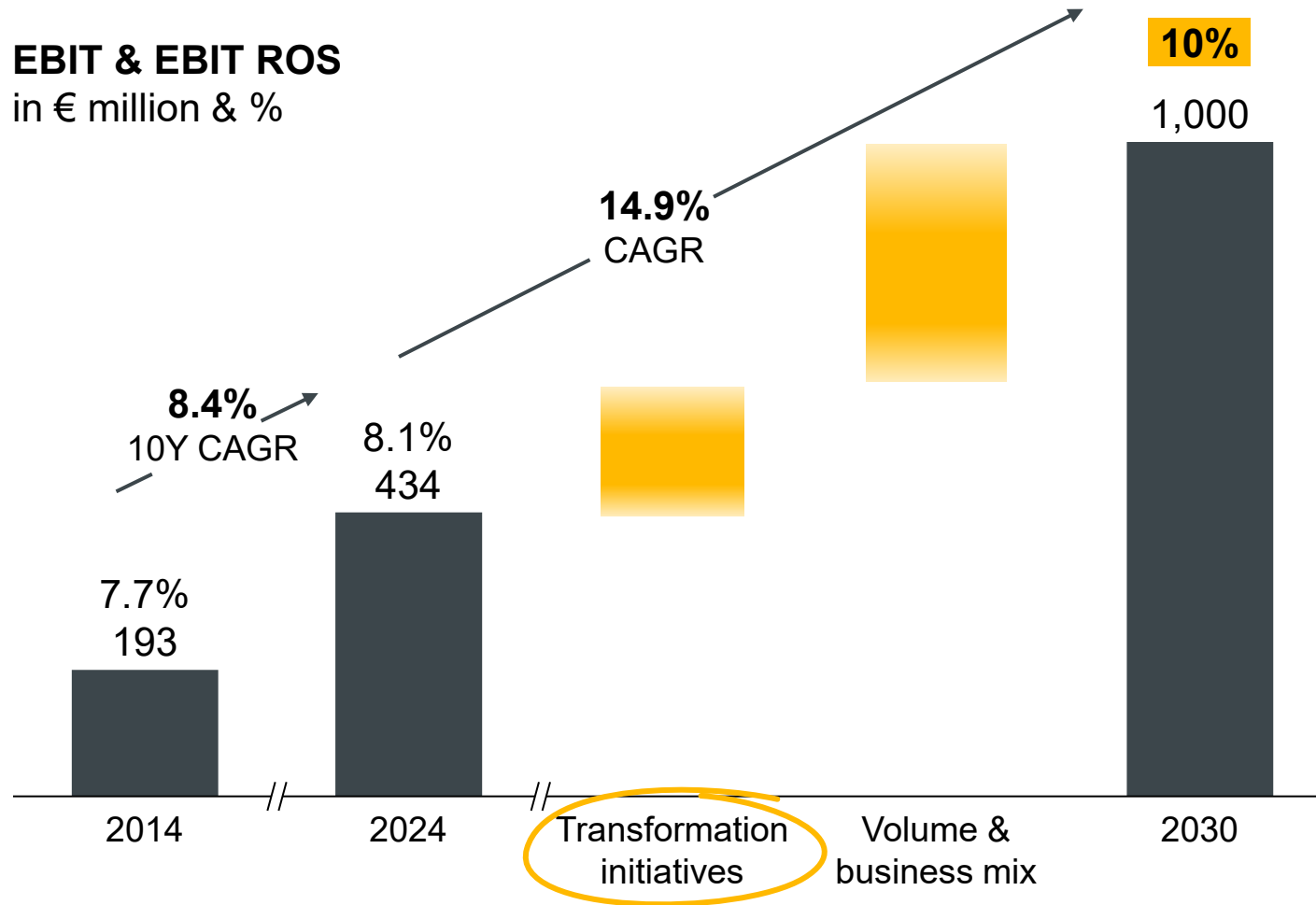
**uplift**  
VENTURES





# Transformation: We are on track to deliver 10% EBIT ROS by 2030

EBIT & EBIT ROS  
in € million & %



## Our profitability formula

improving  
organisational structure



digitalisation and re-design  
of data & processes



seizing of growth potentials



passion of our team  
members – enabled by AI



# Transformation: We strive to achieve best-in-class productivity through optimised processes and structures

## **OBJECTIVE 2030**

Establishing an organisational design that is **highly productive, cost-efficient** and even **more customer centric**

### **DEEP** (Digital End-to-End Processes)

Customer-centric & lean processes, optimised data structures and a future-proof IT architecture – enabled by AI

### **TOM** (Target Operating Model)

New group operating model with business-driven segments, global Business Service Centers and lean infrastructure (asset light)

### **Manufacturing footprint**

Efficient and sustainable manufacturing network, scaled to support our global expansion

**> €30,000**  
EBIT / FTE in 2030

**~ €21,000**  
EBIT / FTE in 2024

**~ €14,000**  
EBIT / FTE in 2019



# AI is the next big revolution and a cornerstone of our strategy

## AI enhancing our internal capabilities – making us smarter, faster and more efficient

We have established the **Jungheinrich AI Office** and a **Centre of Excellence** to **provide governance, deliver trainings** and **execute attractive use cases**



Jungheinrich  
Chatbot



Robotic process  
automation



Production quality  
assurance



Technician  
support



## AI is enabling us to deliver smarter and more intuitive solutions

Already today AI is **integrated in our digital products** and will drive the creation of an even **more customer-centric portfolio**

WMS

Warehouse  
Management  
System



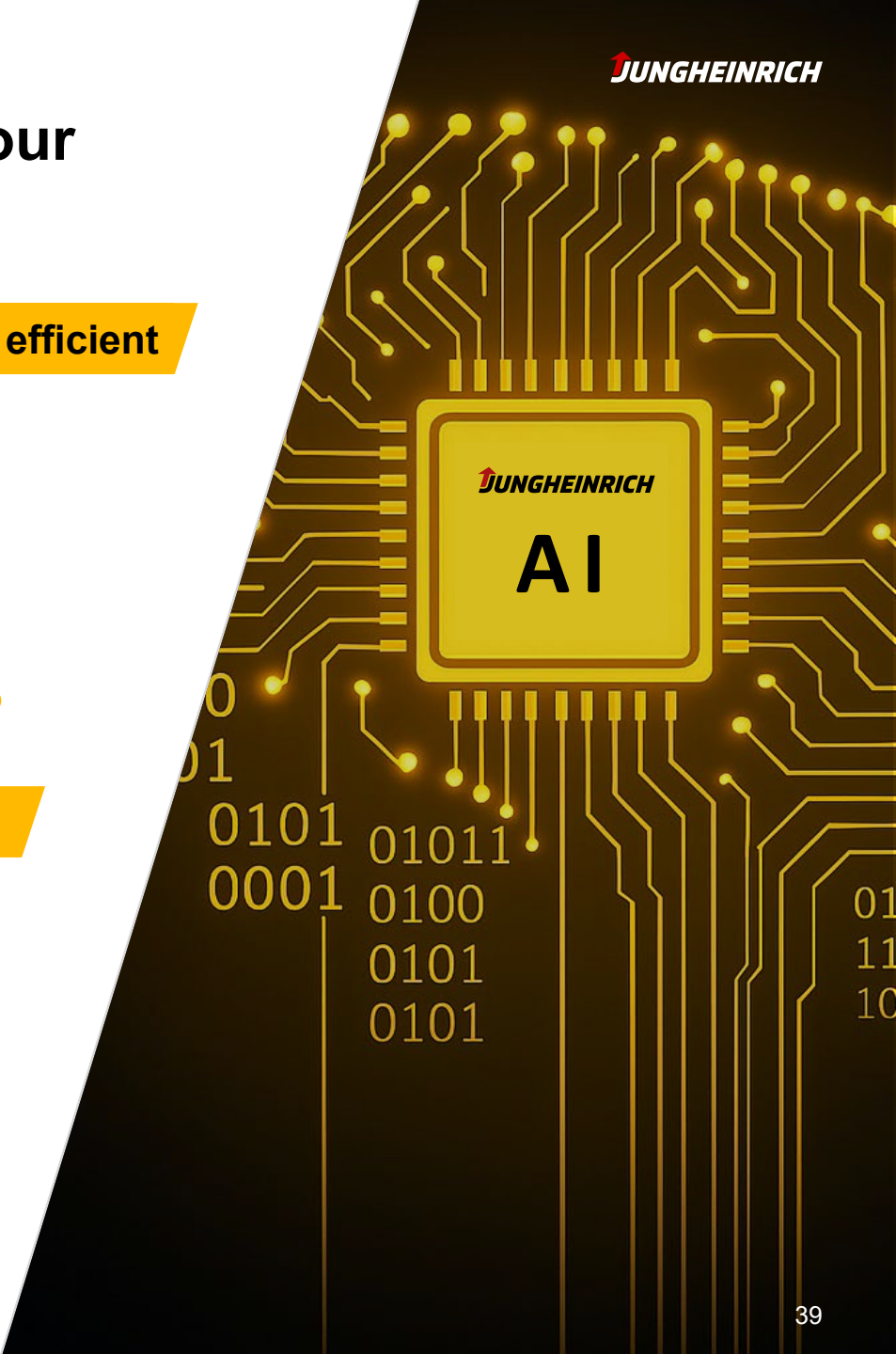
Navigation and  
control system



Predictive  
maintenance



Product  
development







# Transformation: Reinforcing our leading position in sustainability to create greater value for all our stakeholders

## Where we are today

Continuing our integrated approach across our organisation, our supply chains, partners, and customers

Top 1%

of the world's **most sustainable companies**<sup>1</sup>

100%

**electric** material handling

99%

**reuse & recycling** rate

81%

electricity from **renewable sources**



Reducing CO<sub>2</sub> emissions



Advancing all aspects of ESG



Fostering social responsibility



Developing energy-efficient products and production methods



<sup>1</sup> Based on EcoVadis

A large yellow circle containing the black number '3'.

# 3

## Key takeaways

2030+  
**STRATEGY**



# Our goals and capital allocation priorities set the clear framework for our ambitions

## Targets for 2030

Revenue

**€10 billion**

EBIT ROS

**10%**

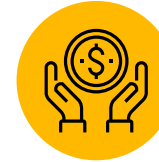
Cash conversion rate<sup>1</sup>

**Ø > 80%**

Corporate Carbon Footprint

**Net-zero**  
(Scopes 1 & 2)  
**+ SBTi**  
(Scopes 1 - 3)

## Capital allocation



**Investments**

**R&D expenditure**  
~3-4% of revenue p.a.  
**Capital expenditure<sup>2</sup>**  
~1-2% of revenue p.a.



**M&A**

Maintaining capital structure of **maximum leverage of 1.5x net debt<sup>3</sup> / EBITDA** over time



**Shareholder returns**

Continued commitment to **our reliable dividend policy**

<sup>1</sup> Average Cash conversion rate (Free cash flow / Profit or loss) within the strategy timeframe

<sup>2</sup> Property, plant and equipment and intangible assets without development expenditure and right-of-use assets

<sup>3</sup> Financial liabilities (excl. liabilities from financial services) – Cash and cash equivalents and securities

# We have a strong foundation and significant growth potential across the business

**Jungheinrich 2030: A world-leading market player delivering material handling solutions of exceptional value**

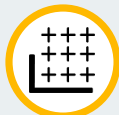
## GROWTH LEVERS



**Global expansion:** A truly global business with an expanded presence in North America and APAC



**A leading automation player:** Significant growth of our automation business in Europe and North America




**Portfolio extension:** Full-liner portfolio featuring cost-effective Mid-Tech solutions and new businesses beyond our core

## PROFITABILITY LEVER



**Transformation:** Achieving best-in-class productivity and sustainability

10 / 10



# Agenda

1

Jungheinrich at a glance

2

Key figures Q1 2025

3

Strategy 2030+

4

Outlook

5

Additional information

# Geopolitical tensions weigh on European economic expectations



GDP <sup>1</sup> in %	2024	2025 forecast
World	3.3	2,8
USA	2.8	1,8
China	5.0	4.0
Eurozone	0.9	0.8
Germany	-0.2	0.0

<sup>1</sup> Source: International Monetary Fund, 22 April 2025



## Risks

Weak European economic environment

Geopolitical conflicts, incl. trade tariffs

Structural increase in competitive pressure



## Opportunities

**Intact drivers:** electrification, automation, digitalisation, e-commerce and sustainability

**Innovations and disruptive technologies**

Global **expansion opportunities**

# 2025 forecast unchanged

	2024 Actual	2025 forecast
<b>Incoming orders</b> in € billion	5.3	5.5 to 6.1
<b>Revenue</b> in € billion	5.4	5.4 to 6.0
<b>EBIT</b> in € million	434	430 to 500
<b>EBIT ROS</b> in %	8.1	7.8 to 8.6
<b>EBT</b> in € million	404	400 to 470
<b>EBT ROS</b> in %	7.5	7.3 to 8.1
<b>ROCE</b> in %	17.3	15.0 to 19.0
<b>Free cash flow</b> in € million	431	>300

## Forecast assumptions

No further intensification of geopolitical tensions

No significant change in cost of materials

Current interest rate environment and exchange rates roughly the same as before

Stable supply chains

## Effects from acquisitions

Purchase price allocations (€10 million)

Variable remuneration (€3 million)



# Disclaimer

The explanations in this presentation are partially forward-looking statements that are based on the company management's current expectations, assumptions and assessments for future developments. Such statements are subject to risks and uncertainty that are largely beyond the company's control. This includes changes in the overall economic situation – such as impacts from geopolitical conflicts, natural catastrophes, pandemics and similar force majeure events –, debt issues, within the material handling sector, in materials supply, the availability and price development of energy and raw materials, demand in

important markets, developments in competition and regulatory frameworks and regulations, exchange and interest rates and the outcome of pending or future legal proceedings. Should these or other uncertainties or unknown factors apply or the assumptions on which these statements are based prove false, actual results may deviate significantly from the results stated or implied. No responsibility is therefore taken for forward-looking statements. Without prejudice to existing capital market obligations, there is no intention to accept any obligation to update forward-looking statements.

 ***JUNGHEINRICH***



# Agenda

1

Jungheinrich at a glance

2

Key figures Q1 2025

3

Strategy 2030+

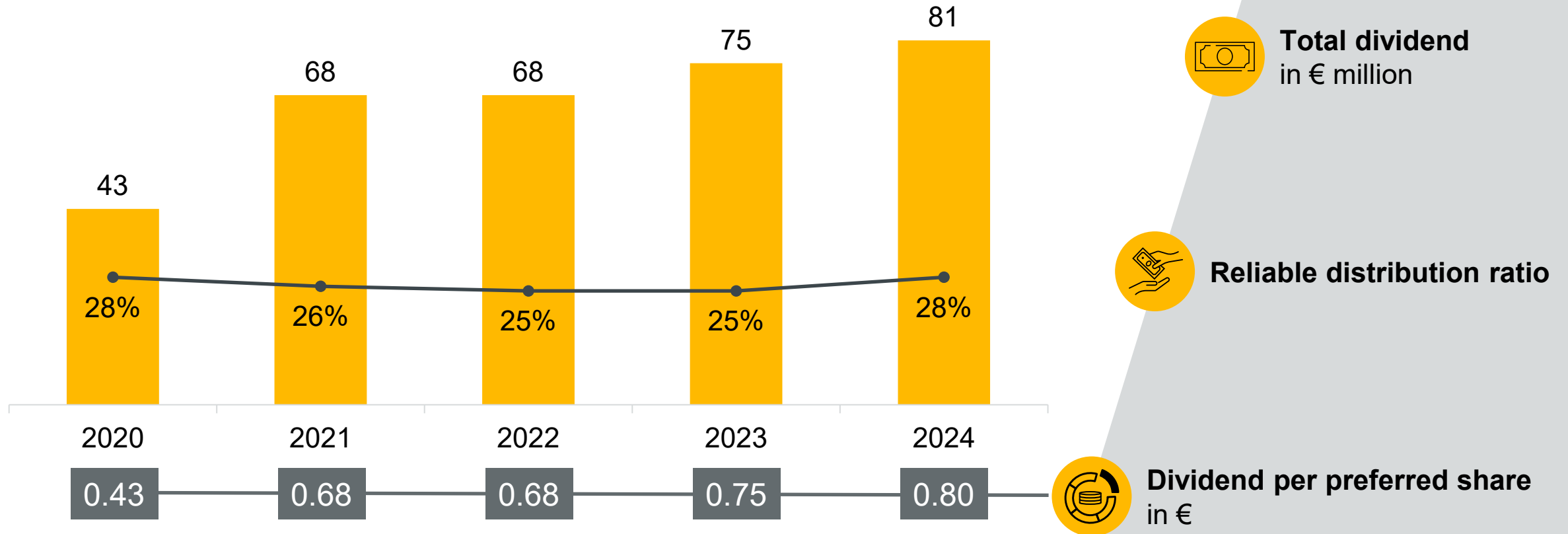
4

Outlook

5

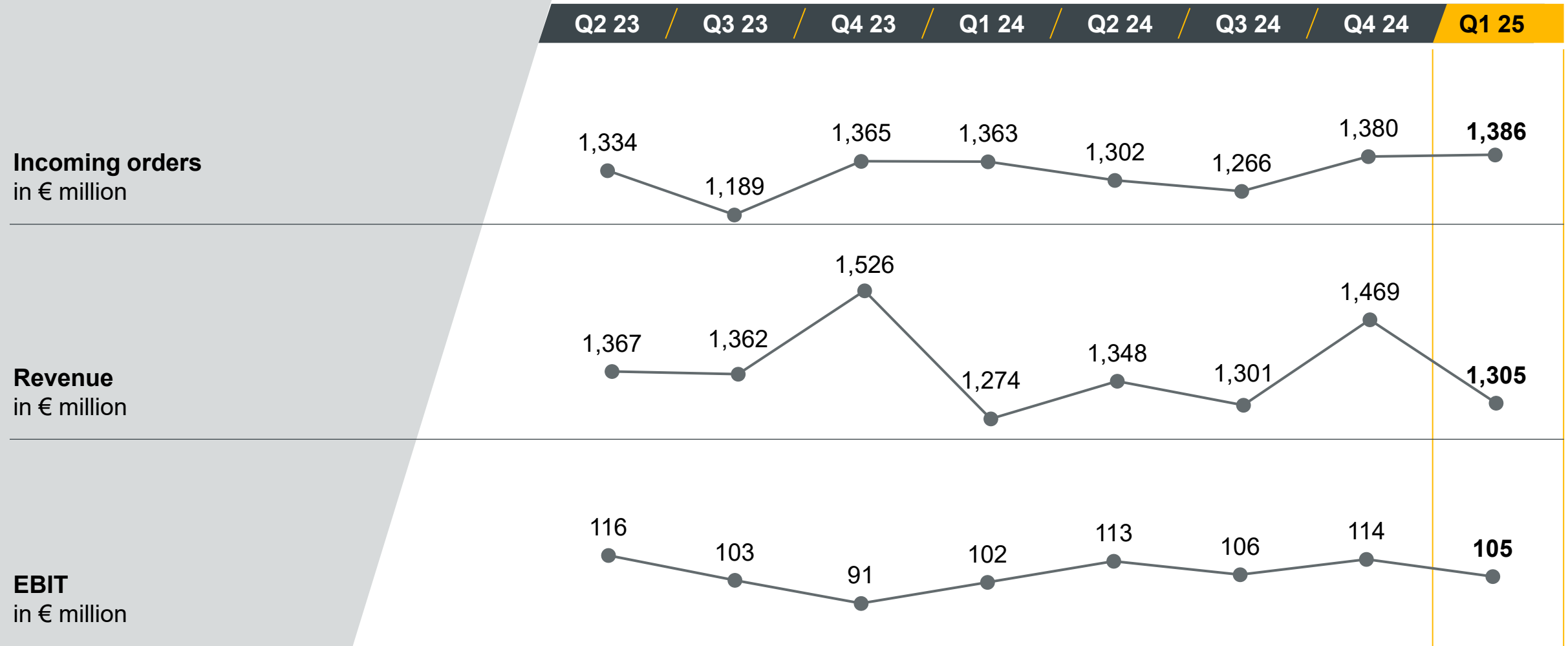
Additional information

## Dividend policy: Distribution ratio between 25% and 30%





# Quarterly figures at a glance



# Jungheinrich

## key figures

### 2020–2024 (I)

in € million

	2020	2021	2022	2023	2024
<b>Incoming orders</b>	3,777	4,868	4,791	5,238	5,311
<b>Group revenue</b>	3,809	4,240	4,763	5,546	5,392
thereof Germany	917	1,014	1,106	1,205	1,168
thereof abroad	2,892	3,226	3,657	4,341	4,224
<b>EBIT</b>	218	360	386	430	434
<b>EBIT ROS</b>	5.7%	8.5%	8.1%	7.8%	8.1%
<b>ROCE<sup>1</sup></b>	10.8%	20.2%	16.3%	15.9%	17.3%
<b>Free cash flow</b>	–	89	–239	15	431
<b>R&amp;D expenditure</b>	89	102	128	152	171
<b>Capital expenditure<sup>2</sup></b>	75	71	73	90	88

<sup>1</sup> EBIT for the Intralogistics segment in % of the segment's average capital employed

<sup>2</sup> Property, plant and equipment and intangible assets without capitalised development expenditure and right-of-use assets

# Jungheinrich

## key figures

### 2020–2024 (II)

in € million

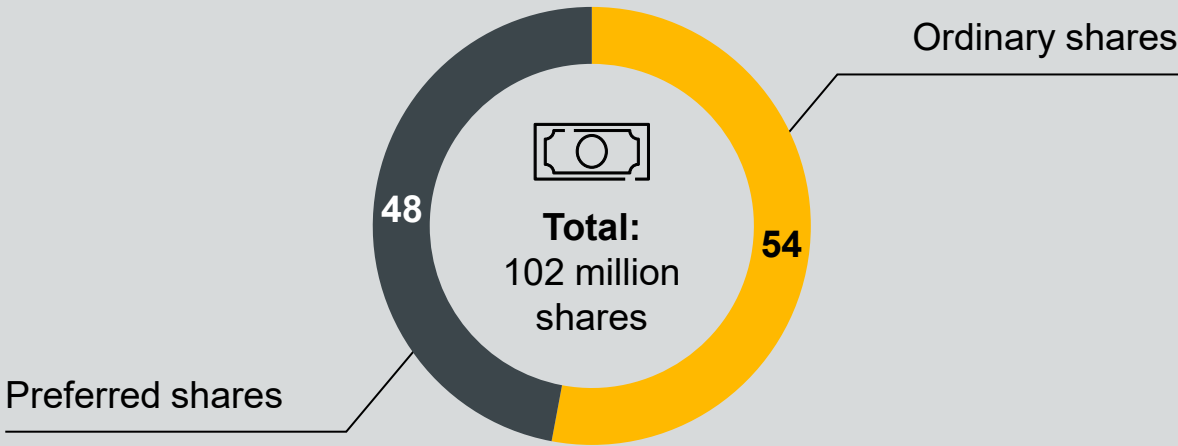
	2020	2021	2022	2023	2024
<b>Equity ratio</b> (Intralogistics)	45%	48%	50%	47%	52%
<b>Equity ratio</b> (Group)	29%	31%	33%	32%	34%
<b>Net credit (–) / net debt (+)</b> <sup>1</sup>	–194	–222	75	262	–22
<b>Tax ratio</b>	25%	23%	22%	25%	28%
<b>Profit or loss</b>	151	267	270	299	289
<b>Employees</b> (FTE <sup>2</sup> )	18,103	19,103	19,807	21,117	20,922
thereof Germany	7,577	7,995	8,251	8,688	8,510
thereof abroad	10,526	11,108	11,556	12,429	12,412
<b>Dividend per preferred share</b>	€0.43	€0.68	€0.68	€0.75	€0.80

<sup>1</sup> Net debt = Financial liabilities – Cash and cash equivalents and securities

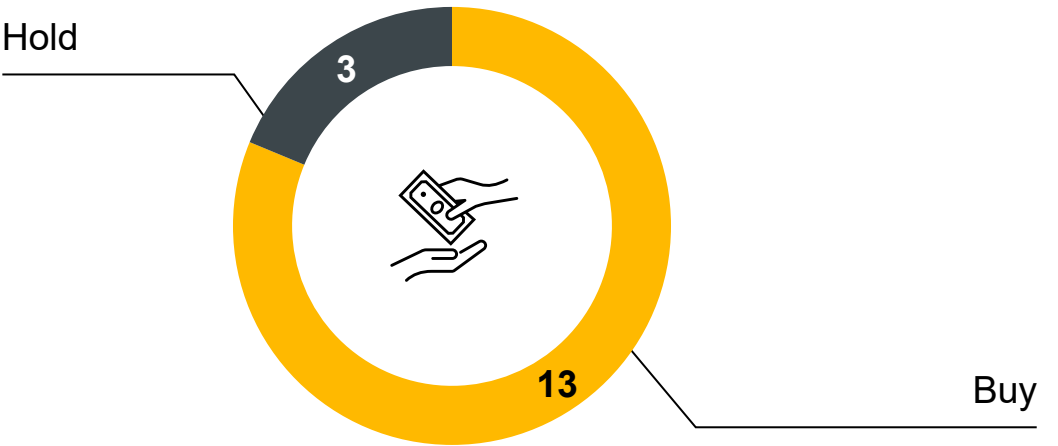
<sup>2</sup> Full-time equivalents, always on 31/12

# Jungheinrich share: Key figures and analyst coverage

## Share structure



## Analyst coverage as of 30/04/2025



Key figures for the share	2020	2021	2022	2023	2024
Earnings per preferred share	€1.49	€2.62	€2.65	€2.94	€2.84
Dividend per preferred share	€0.43	€0.68	€0.68	€0.75	€0.80
Total dividend distribution	€43 million	68 million	€68 million	€75 million	€81 million
Distribution ratio	28%	26%	25%	25%	28%



# Long-term performance of the Jungheinrich share






	2020	2021	2022	2023	2024
<b>Dividend yield preferred share in %</b>	1.2	1.5	2.6	2.3	3.1
<b>Market capitalisation in € million</b>	3,733	4,578	2,711	3,388	2,617
<b>Share price performance in %</b>	70	23	-41	25	-23

Investment period	10 years	5 years	3 years
<b>Investment date</b>	01/01/15	01/01/20	01/01/24
<b>Portfolio value at end of 2023</b>	€17,327	€12,888	€6,099
<b>Average return p.a.</b>	5.7%	5.2%	-15.2%
<b>Comparable return of German share indices p.a.</b>			
DAX	7.4%	8.3%	7.5%
MDAX	4.2%	-2.2%	-10.3%
SDAX	6.6%	1.6%	-6.4%

Please note:  
based on an initial investment of € 10 thousand and assuming that annual dividends received were reinvested in additional preferred shares



# Sustainability efforts paying out in Ratings

Rating Agency	Current rating	Previous rating
	<b>Platinum</b> (Top 1% of assessed companies)	Platinum (Top 1% of assessed companies)
	Climate change: <b>B</b> (nine-step scale from A to F)	Climate change: B (nine-step scale from A to F)
	<b>B- (Prime)</b> (twelve-step scale from A+ to D-)	B- (Prime) (twelve-step scale from A+ to D-)
	<b>Medium-risk</b> (five-step scale of negligible to severe ESG risk)	Medium-risk (five-step scale of negligible to severe ESG risk)
	<b>A</b> (seven-step industry-specific scale from AAA to CCC)	A (seven-step industry-specific scale from AAA to CCC)

# Board of Management team



**Dr Lars Brzoska**

Chairman of the Board of Management,  
Corporate, Automation (interim)



**Dr Volker Hues**

Member of the Board of Management, Finance



**Heike Wulff**

Member of the Board of Management,  
Accounting, Controlling, Tax



**Nadine Despineux**

Member of the Board of Management, Sales



**Maik Manthey**

Member of the Board of Management, Technics

# Remuneration system



## Basic remuneration

Fixed ~40 to 50%,  
non-performance-related

remuneration paid as  
monthly payments

Ancillary benefits (~1 to 5%):  
Primarily company car and  
insurance policies

Pension (~5 to 15%):  
Performance-based commitment for  
members appointed before 2024 and  
generally fixed supply payment for  
members appointed from 2024



## Short-term variable remuneration

Target bonus  
(~15 to 25%)

45% Group EBT return on sales  
35% Increase in Group revenue  
20% Lithium-ion equipment ratio

Discretionary factor:  
0.8 to 1.2

Payment limit:  
150% of target amount

Term: 1 year



## Long-term variable remuneration

Virtual performance share plan  
(~20 to 30%)

60% Return on capital employed (ROCE)  
20% Relative total shareholder return (TSR)  
20% compared with an individual peer group  
sustainability target

Discretionary factor:  
0.8 to 1.2

Payment limit:  
180% of target amount

Term: 3 years



# 2025 financial calendar and IR contact

## Financial calendar

Date	Event
27/03/2025	Balance sheet press conference (virtual)
27/03/2025	Analyst conference (virtual)
07/05/2025	Interim statement as of 31/03/2025
20/05/2025	Annual General Meeting (virtual)
23/05/2025	Dividend payment
08/08/2025	Interim report as of 30/06/2025
12/11/2025	Interim statement as of 30/09/2025



## IR contact

**Andrea Bleesen**  
Head of Corporate Investor Relations

**Jungheinrich Aktiengesellschaft**  
Friedrich-Ebert-Damm 129  
22047 Hamburg, Germany

Tel +49 40 6948 3407  
andrea.bleesen@jungheinrich.de  
www.jungheinrich.com



## General information

Subscribed capital: €102 million divided into  
54,000,000 no-par-value ordinary shares  
48,000,000 no-par-value preferred shares  
(listed)

Stock exchanges: Frankfurt, Hamburg  
and all other German stock exchanges

Securities identification numbers  
(preferred shares):

ISIN: DE0006219934  
WKN: 621 993

Segment: Prime Standard  
Branch: Industry  
Stock index: MDAX

Tickers:  
Reuters JUNG\_p.de  
Bloomberg JUN3 GR