

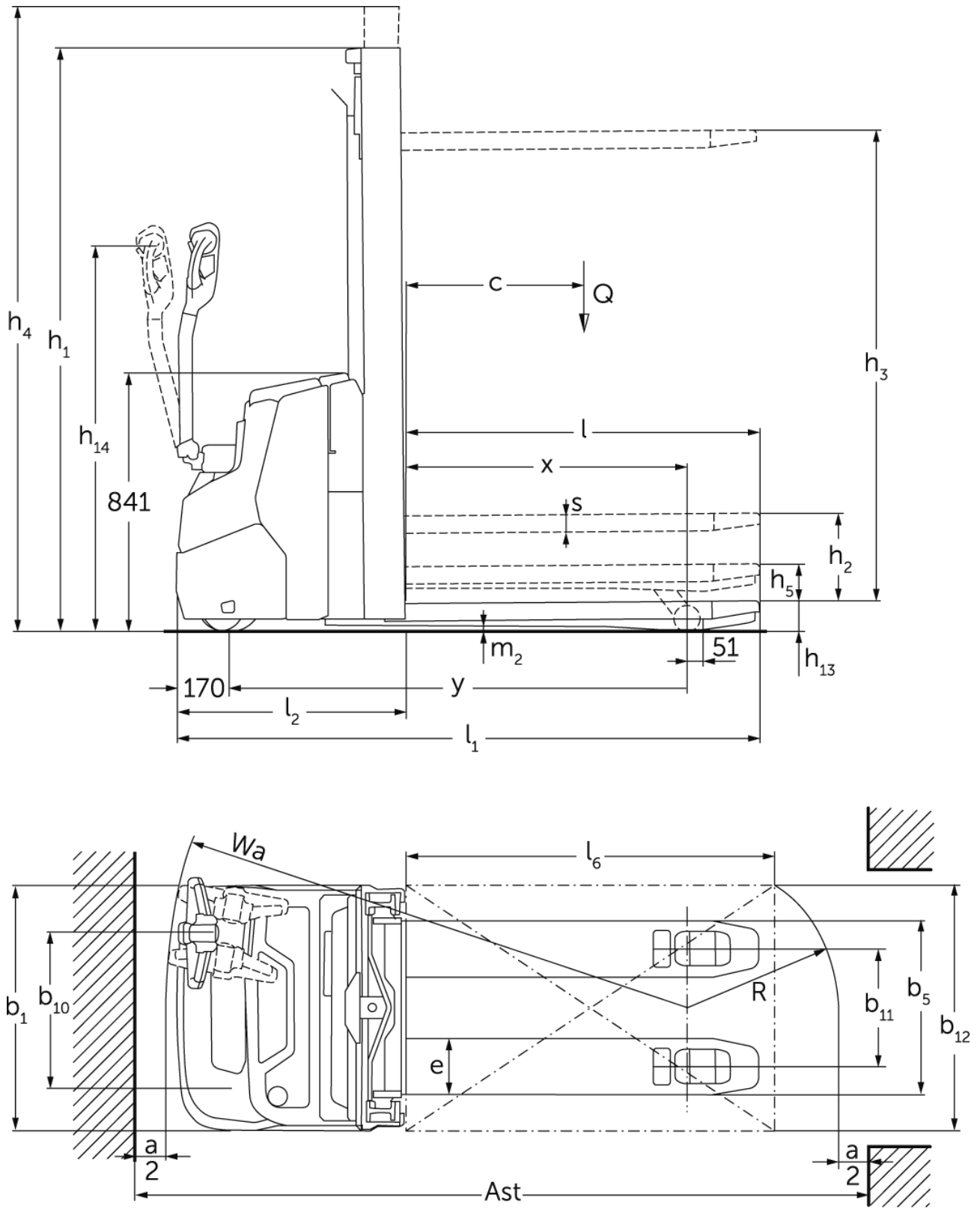


Electric pedestrian stacker with support arm lift

EJC 110zi / 112zi

Lift height: 2300-4700 mm / Load capacity: 1000-1200 kg

EJC 110zi / 112zi



EJC 110zi / 112zi

VDI table

Stand-on: 07/2024


Characteristic	Code	Description			Jungheinrich	
					EJC 110zi	EJC 112zi
Characteristic	1.1	Manufacturer (abbreviated description)			Jungheinrich	
	1.2	Manufacturer's type designation			EJC 110zi	EJC 112zi
	1.3	Drive			Electric	
	1.4	Operation			Pedestrian	
	1.5	Load capacity/load	Q	kg	1000	1200
	1.5.1	Rated capacity/load with mast lift	Q	kg	1000	1200
	1.5.2	Rated capacity/load with support arm lift	Q	kg	1400	1600
	1.6	Load centre distance	c	mm	600	
	1.8	Load distance, centre of drive axle to fork	x	mm	914	
1.9	Wheelbase	y	mm	1493		
Weights	2.1.1	Service weight (incl. battery)		kg	860	870
	2.2	Axle load laden front/rear		kg	840 / 1020	890 / 1180
	2.3	Axle load unladen front/rear		kg	610 / 250	620 / 250
Wheels/suspension system	3.1	Tyres			Polyurethane (PU)	
	3.2	Tyre size, front			Ø230 x 70	
	3.3	Tyre size, rear			Ø 85 x 95 / Ø75 x 75	
	3.4	Additional wheels			Ø140 x 54	
	3.5	Wheels, number front/back (x=driven)			1x +1 / 2	
	3.6	Tread width, front	b10	mm	507	
	3.7	Tread width, rear	b11	mm	385	
Basic dimensions	4.2	Retracted mast height (h1)	h1	mm	1950	
	4.3	Free lift (h2)	h2	mm	100	
	4.4	Lift (h3)	h3	mm	2900	
	4.5	Extended mast height (h4)	h4	mm	3375	
	4.6	Initial lift	h5	mm	122	
	4.9	Height of tiller handle in drive position min./max.	h14	mm	750 / 1260	
	4.15	Height, lowered	h13	mm	90	
	4.19	total length	l1	mm	1899	
	4.20	Length including fork shank	l2	mm	749	
	4.21.1	total width	b1	mm	800	
	4.22	Fork dimensions	s/e/l	mm	56 x 185 x 1150	
	4.25	Width across forks	b5	mm	570	
	4.32	Ground clearance centre of wheelbase	m2	mm	18	
	4.34.1	Aisle width (pallet 1000x1200 sideways)	Ast	mm	2136	
	4.34.2	Aisle width (pallet 800x1200 length)	Ast	mm	2186	
4.35	Turning radius	Wa	mm	1700		
Performance data	5.1	Travel speed laden/unladen		km/h	6 / 6	
	5.2	Lift speed laden/unladen		m/s	0.15 / 0.24	0.16 / 0.29
	5.3	Lowering speed laden/unladen		m/s	0.34 / 0.34	0.41 / 0.37
	5.8	Max. gradeability laden/unladen		%	5 / 14	
	5.10	Service brake			generative	
E-motor/Electronics	6.1	Drive motor, performance S2 60 min		kW	0.9	
	6.2	Lift motor, performance with S3		kW	2.2	
	6.3	Battery according to DIN 43531/35/36			no	
	6.4	Battery voltage/nominal capacity		V / Ah	24 / 105	
	6.5	Battery weight		kg	45	
	6.6.1	Energy consumption according to EN cycle		kWh/h	0.66	

	6.6.2	CO2 equivalent as per EN 16796	kg/h	0.4
Other	8.1	Type of drive control		AC
	10.7	Sound level as per EN12053, operator's ear	dB (A)	65
- This data sheet according to VDI guideline 2198 only states the technical values of the standard truck. Different tyres, other masts, additional equipment etc. may result in different values.				

All values for standard mast type 2900 ZT; support arms raised.

- VDI no. 1.8: with DZ mast: $x - 40$ mm; with lowered support arms: $x + 51$ mm.
- VDI no. 1.9: with lowered support arms: $y + 51$ mm.
- VDI no. 4.19: with DZ mast: $l1 + 40$ mm.
- VDI no. 4.20: with DZ mast: $l2 + 40$ mm.
- VDI no. 4.34.1: diagonal as per VDI: aisle width + 370 mm; with DZ: aisle width + 40 mm; tiller in upright position (slow travel).
- VDI no. 4.34.2: diagonal as per VDI: aisle width + 206 mm; with DZ mast: aisle width + 40 mm; tiller in upright position (slow travel).
- VDI no. 4.35: with lowered support arms: $x + 51$ mm; tiller in upright position (slow travel).
- VDI no. 5.8: max. gradeability laden with VDI 1.5.2: 4%.
- VDI no. 6.2: EJC 110zi: S3 = 5% ED; EJC 112zi: S3 = 10% ED.

The German production facilities in
Norderstedt, Moosburg and Landsberg
are certified as well as our Genuine Parts
Center in Kaltenkirchen. ISO 9001
ISO 14001

Jungheinrich fork lift trucks meet
European safety requirements. 

 **JUNGHEINRICH**