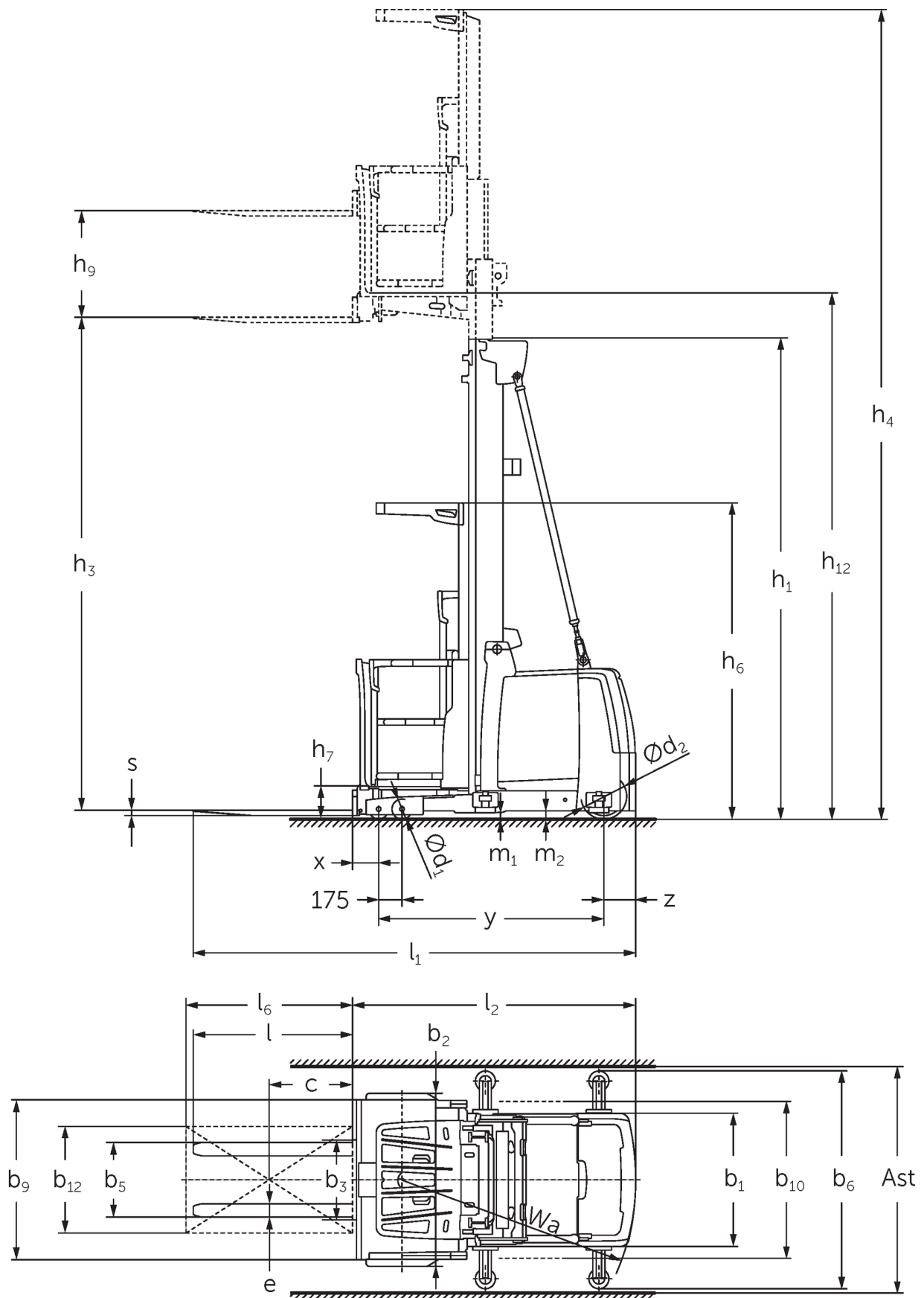




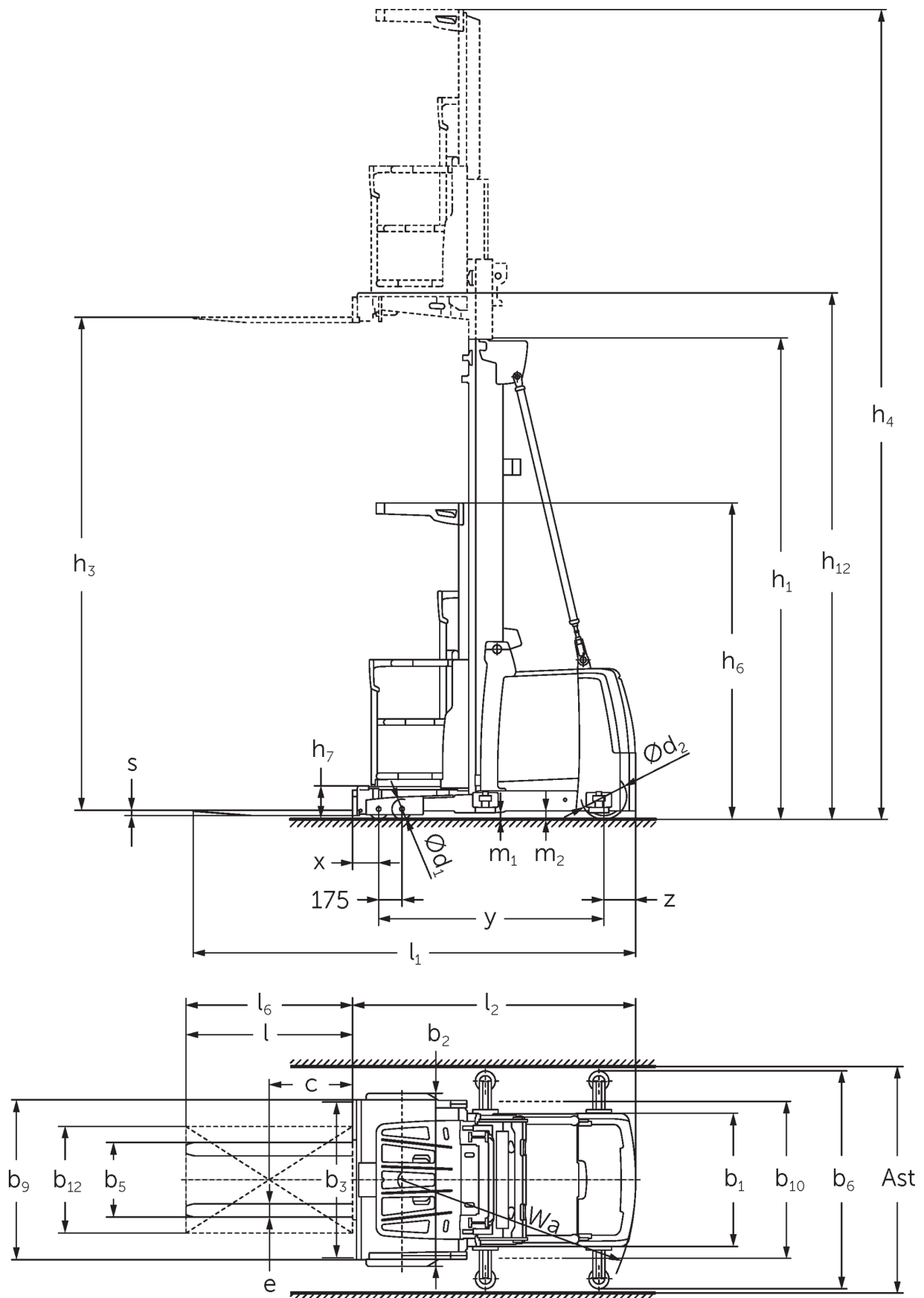
Medium/high level order picker **EKS 412s**

Lift height: 5000-12500 mm / Load capacity: 1200 kg

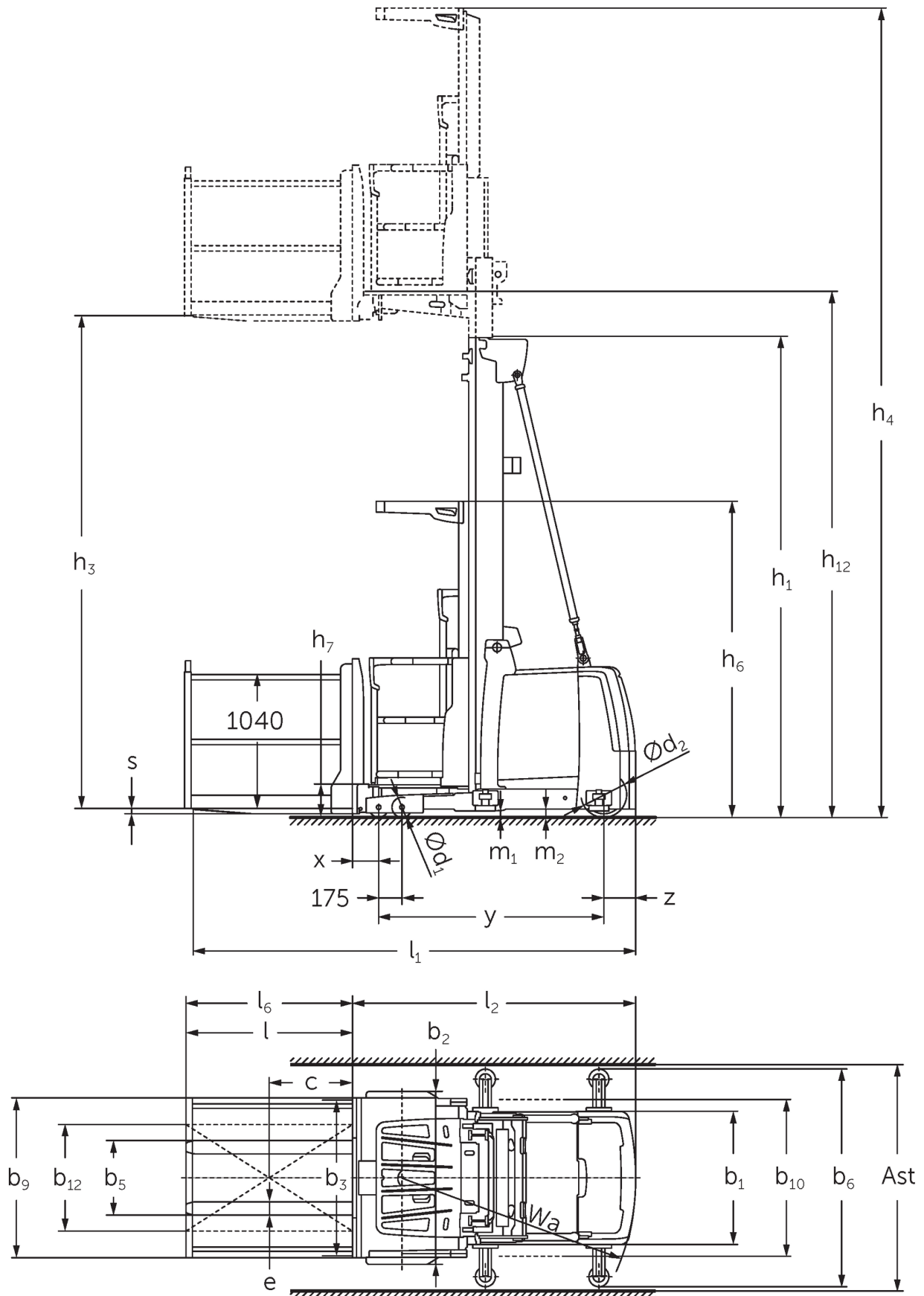
EKS 412s



EKS 412s



EKS 412s



EKS 412s


VDI table

Stand-on: 07/2024

			Jungheinrich						
			EKS 412s Z I	EKS 412s Z SF	EKS 412s L I	EKS 412s L SF	EKS 412s O I	EKS 412s O SF	
Characteristic	1.1	Manufacturer (abbreviated description)							
	1.2	Manufacturer's type designation							
	1.3	Drive	Electric						
	1.4	Operation	Order pickers						
	1.5	Load capacity/load	Q	kg	1200				
	1.6	Load centre distance	c	mm	400				
	1.8	Load distance, centre of drive axle to fork	x	mm	155	145			
	1.9	Wheelbase	y	mm	1690				
	Weights	2.1.1	Service weight (incl. battery)		kg	3650	3850		3590
2.2		Axle load laden front/rear		kg	3575 / 1160	3825 / 1110		3515 / 1160	
2.3		Axle load unladen front/rear		kg	1840 / 1810	2090 / 1760		1780 / 1810	
Wheels/ suspension system	3.1	Tyres	Polyurethane (PU)						
	3.2	Tyre size, front	Ø 150 x 100						
	3.3	Tyre size, rear	Ø 343 x 110						
	3.5	Wheels, number front/back (x=driven)	4 / 1 x						
Basic dimensions	4.2	Retracted mast height (h1)	h1	mm	3330				
	4.4	Lift (h3)	h3	mm	5000				
	4.5	Extended mast height (h4)	h4	mm	7370				
	4.7	Height of overhead guard (cab)	h6	mm	2370				
	4.8.1	Stand height	h7	mm	245				
	4.11	Additional lift	h9	mm	800	-			
	4.14	Stand height, elevated	h12	mm	5245				
	4.15	Height, lowered	h13	mm	60				
	4.19	total length	l1	mm	3285	3330		3275	
	4.20	Length including fork shank	l2	mm	2085	2075			
	4.21.1	total width	b1	mm	1000				
	4.22	Fork dimensions	s/ e/l	mm	40 x 100 x 1200	50 x 100 x 1200	50 x 100 x 1250	50 x 100 x 1200	
	4.25	Width across forks	b5	mm	560				
	4.27	Width over guide rollers	b6	mm	-	1200	-	1200	-
4.31	Ground clearance laden under mast	m1	mm	50					
4.35	Turning radius	Wa	mm	1930					
Performance data	5.1	Travel speed laden/unladen		km/h	12 / 12				
	5.2	Lift speed laden/unladen		m/s	0.5 / 0.5				
	5.3	Lowering speed laden/unladen		m/s	0.5 / 0.4				
	5.10	Service brake			regenerative				
	5.11	Parking brake			Electric sprung-loaded				
E-motor/ Electronics	6.1	Drive motor, performance S2 60 min		kW	6.5				
	6.2	Lift motor, performance with S3		kW	12				
	6.4	Battery voltage/nominal capacity		V / Ah	48 / 620				
	6.5	Battery weight		kg	935				
Other	8.1	Type of drive control			AC synchronous reluctance				
	10.5	Steering version			electric				
	10.7	Sound level as per EN12053, operator's ear		dB (A)	60				

- This data sheet according to VDI guideline 2198 only states the technical values of the standard truck. Different tyres, other masts, additional equipment etc. may result in different values.

The German production facilities in
Norderstedt, Moosburg and Landsberg
are certified as well as our Genuine Parts
Center in Kaltenkirchen. ISO 9001
ISO 14001

Jungheinrich fork lift trucks meet
European safety requirements. 

**JUNGHEINRICH**