



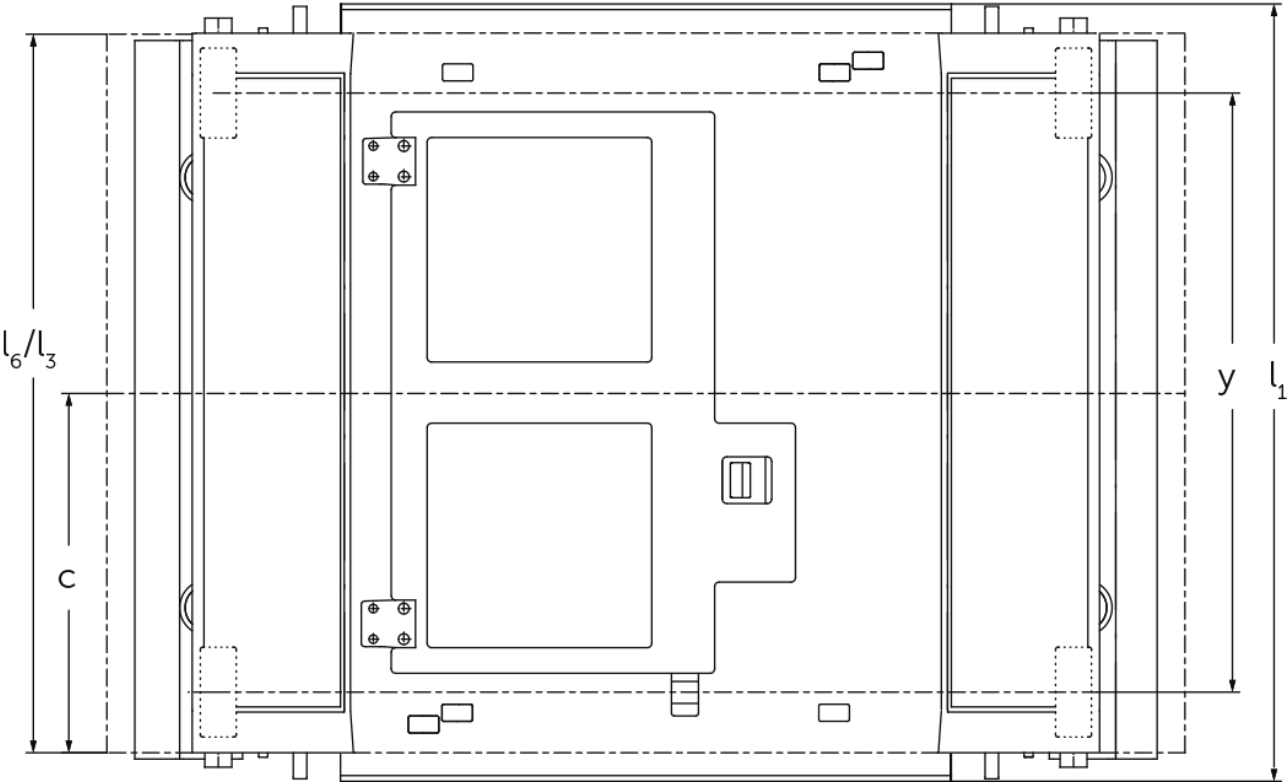
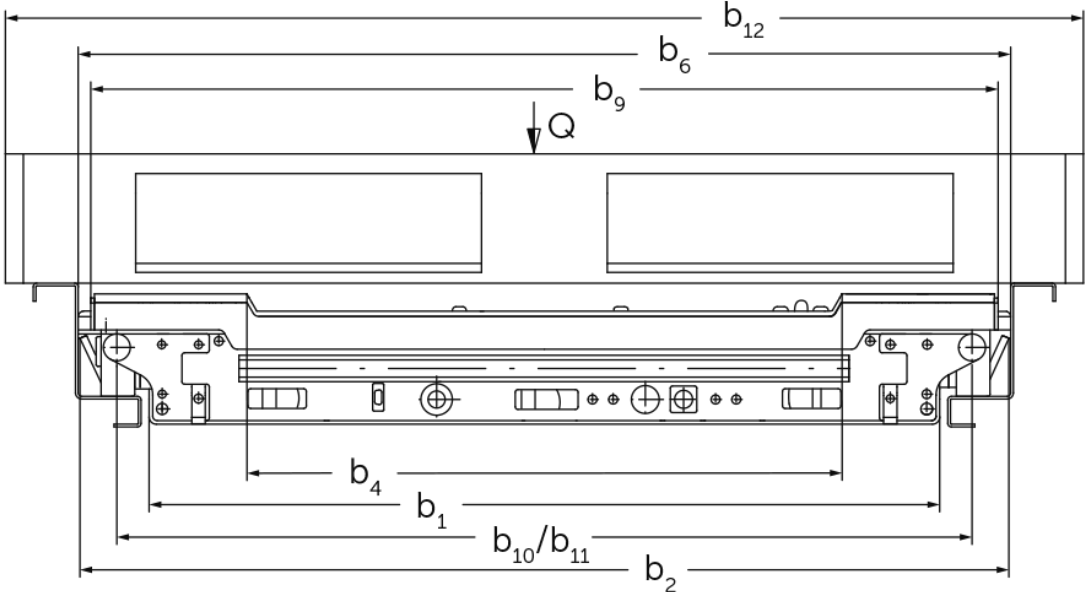
# UPC Under Pallet Carrier

## UPC P1-P6

Lift height: 27 mm / Load capacity: 1500 kg

**JUNGHEINRICH**

# UPC P1-P6



# VDI table

Stand-on: 11/2024

Characteristic	1.1	Manufacturer (abbreviated description)		Jungheinrich				
				UPC P1	UPC P2	UPC P4	UPC P5	UPC P6
Characteristic	1.2	Manufacturer's type designation						
	1.3	Drive		Electric				
	1.4	Operation		Manual				
	1.5	Load capacity/load	Q kg	1500				
	1.6	Load centre distance	c mm	400	500	600	500	570
	1.9	Wheelbase	y mm	665	842	1045	842	985
	Weights	2.1.1	Service weight (incl. battery)	kg	195	208	212	208
2.2		Axle load laden front/rear	kg	836 / 836	854 / 854	856 / 856	854 / 854	863 / 863
2.3		Axle load unladen front/rear	kg	85 / 85	104 / 104	106 / 106	104 / 104	113 / 113
Wheels/suspension system	3.1	Tyres		Polyurethane (PU)				
	3.2	Tyre size, front		100 x 40				
	3.3	Tyre size, rear		100 x 40				
	3.5	Wheels, number front/back (x=driven)		2x / 2x				
	3.6	Tread width, front	b10 mm	952		782	952	842
	3.7	Tread width, rear	b11 mm	952		782	952	842
Basic dimensions	4.4	Lift (h3)	h3 mm	27				
	4.15	Height, lowered	h13 mm	145				
	4.16	Loading area length	l3 mm	800	1000	1200	1000	1140
	4.18	Loading area width	b9 mm	1010		840	1010	900
	4.19	total length	l1 mm	865	1065	1268	1065	1208
	4.21.1	total width	b1 mm	890		720	890	780
	4.21.2	total width	b2 mm	1048		878	1048	938
	4.26	Width between support arms/loading areas	b4 mm	672		475	672	548
	4.27	Width over guide rollers	b6 mm	1048		878	1048	938
	4.38.4	Pallet width	mm	1200		1000	1200	1140
	4.38.5	Pallet length	mm	800	1000	1200	1000	1140
Performance data	5.1	Travel speed laden/unladen	km/h	2.9 / 3.6				
	5.2	Lift speed laden/unladen	m/s	0.01 / 0.01				
	5.3	Lowering speed laden/unladen	m/s	0.01 / 0.01				
E-motor/ Electronics	6.1	Drive motor, performance S2 60 min	kW	1.1				
	6.2	Lift motor, performance with S3	kW	0.48				
	6.4	Battery voltage/nominal capacity	V / Ah	24 / 61				
	6.5	Battery weight	kg	48				
Other	10.7	Schalldruckpegel nach EN12053	dB (A)	62				

- This data sheet according to VDI guideline 2198 only states the technical values of the standard truck. Different tyres, other masts, additional equipment etc. may result in different values.

The German production facilities in  
Norderstedt, Moosburg and Landsberg  
are certified as well as our Genuine Parts  
Center in Kaltenkirchen. ISO 9001  
ISO 14001

Jungheinrich fork lift trucks meet  
European safety requirements. 

 **JUNGHEINRICH**