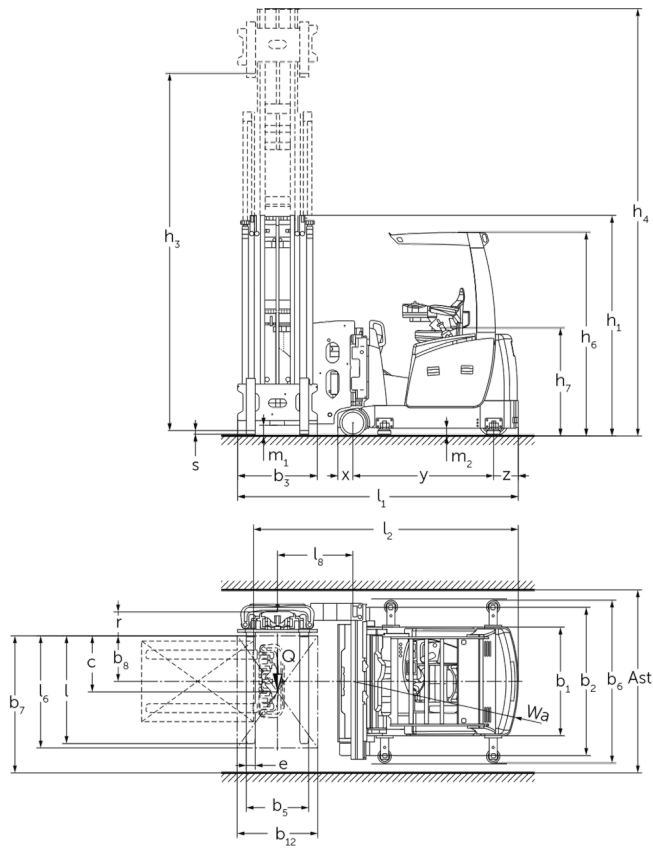




Electric front seat / tri-lateral stacker **EFX 411 / 414**

Lift height: 3000-9000 mm / Load capacity: 1100-1360 kg

EFX 411 / 414



EFX 411 / 414

EFX 411, EFX 414	Lift (h3)	Retracted mast height (h1)	Free lift (h2)	Extended mast height (h4)
Duplex mast ZT	3000 mm	2305 mm	66 mm	3772 mm
	3250 mm	2430 mm	66 mm	4022 mm
	3500 mm	2555 mm	66 mm	4272 mm
	3750 mm	2680 mm	66 mm	4522 mm
	4000 mm	2805 mm	66 mm	4772 mm
	4250 mm	2930 mm	66 mm	5022 mm
	4500 mm	3055 mm	66 mm	5272 mm
	4750 mm	3250 mm	66 mm	5592 mm
	5000 mm	3375 mm	66 mm	5842 mm
	5250 mm	3500 mm	66 mm	6092 mm
	5500 mm	3625 mm	66 mm	6342 mm
	5750 mm	3750 mm	66 mm	6592 mm
	6000 mm	3875 mm	66 mm	6842 mm
Triplex mast DT	4000 mm	2100 mm		4767 mm
	4500 mm	2280 mm		5280 mm
	5000 mm	2460 mm		5793 mm
	5500 mm	2640 mm		6307 mm
	6000 mm	2820 mm		6820 mm
	6500 mm	3000 mm		7333 mm
	7000 mm	3180 mm		7847 mm
Triplex mast DZ	4000 mm	2100 mm	1410 mm	4690 mm
	4250 mm	2190 mm	1500 mm	4940 mm
	4500 mm	2280 mm	1590 mm	5190 mm
	4750 mm	2370 mm	1680 mm	5440 mm
	5000 mm	2460 mm	1770 mm	5690 mm
	5250 mm	2550 mm	1860 mm	5940 mm
	5500 mm	2640 mm	1950 mm	6190 mm

	5750 mm	2730 mm	2040 mm	6440 mm
	6000 mm	2820 mm	2130 mm	6690 mm
	6250 mm	2910 mm	2220 mm	6940 mm
	6500 mm	3000 mm	2310 mm	7190 mm
	6750 mm	3090 mm	2400 mm	7440 mm
	7000 mm	3180 mm	2490 mm	7690 mm
EFX 414	Lift (h3)	Retracted mast height (h1)	Free lift (h2)	Extended mast height (h4)
	7500 mm	3360 mm		8360 mm
	8000 mm	3540 mm		8873 mm
Triplex mast DT	8500 mm	3720 mm		9387 mm
	9000 mm	3900 mm		9900 mm

VDI table

Characteristic	1.1	Manufacturer (abbreviated description)		Jungheinrich	
	1.2	Manufacturer's type designation		EFX 411	EFX 414
	1.3	Drive type		electric	
	1.4	Operation		Tri-lateral stacker	
	1.5	Load capacity/load	Q kg	1100	1360
	1.6	Load centre distance	c mm	600	
	1.8	Load distance, centre of drive axle to fork	x mm	168	
	1.9	Wheelbase	y mm	1572	
	1.10	Mitte Antriebsrad/Gegengewicht	z mm	275	
	Weights	2.1.1	Service weight (incl. battery)	kg	4660
2.2		Axle load laden front/rear	kg	4840 / 1000	5370 / 1170
2.3		Axle load unladen front/rear	kg	3120 / 1540	3250 / 1850
Wheels/suspension system	3.1	Tyres		Vulkollan ®	
	3.2	Tyre size, front		Ø 295 x 144	
	3.3	Tyre size, rear		Ø 343 x 110	
	3.5	Wheels, number front/back (x=driven)		2 / 1x	
	3.6	Tread width, front	b10 mm	1406	
	Basic dimensions	4.2	Retracted mast height (h1)	h1 mm	2100
4.3		Free lift (h2)	h2 mm	0	
4.4		Lift (h3)	h3 mm	4000	
4.5		Extended mast height (h4)	h4 mm	4767	
4.7		Height of overhead guard (cab)	h6 mm	2273	
4.8		Seat height/stand height	h7 mm	1205	
4.19		Total length	l1 mm	3134	
4.20		Length including fork shank	l2 mm	2956	
4.21.1		total width	b1 mm	1210	
4.21.2		total width	b2 mm	1550	
4.22		Fork dimensions	s/e/l mm	40 x 100 x 1200	
4.23		Fork carriage connection class		2B	
4.24		Fork carriage width	b3 mm	890	
4.25		Width across forks	b5 mm	850	
4.27		Width over guide rollers	b6 mm	1600	
4.29		Reach, lateral	mm	1370	
4.30		Reach, lateral from centre of truck	mm	420	
4.31		Ground clearance laden under mast	m1 mm	120	
4.32		Ground clearance centre of wheelbase	m2 mm	87	
4.35		Turning radius	Wa mm	1847	
4.38	Distance swivelling fork pivot point	mm	842		

	4.38.4	Pallet width	mm	1200	
	4.38.5	Pallet length	mm	1200	
Performance data	5.1	Travel speed laden/unladen	km/h	9 / 9	
	5.2	Lift speed laden/unladen	m/s	0.45 / 0.45	
	5.3	Lowering speed laden/unladen	m/s	0.44 / 0.44	
	5.4	Reach speed laden/unladen	m/s	0.35 / 0.35	
	5.10	Service brake		regenerative	
	5.11	Parking brake		Electric sprung-loaded	
E-motor/Electronics	6.1	Drive motor, performance S2 60 min	kW	6.5	
	6.2	Lift motor, performance with S3	kW	12	
	6.3	Battery according to DIN 43531/35/36		5 PzS 625	6 PzS 750
	6.4	Battery voltage/nominal capacity	V / Ah	48 / 625	48 / 750
	6.5	Battery weight	kg	855	1010
	6.6.1	Energy consumption according to EN cycle	kWh/h	1.67	
Other	8.1	Type of drive control		AC drive control system	
	10.5	Steering version		electric	
	10.7	Schalldruckpegel nach EN12053	dB (A)	67	
- This data sheet according to VDI guideline 2198 only states the technical values of the standard truck. Different tyres, other masts, additional equipment etc. may result in different values.					

The German production facilities in
Norderstedt, Moosburg and Landsberg
are certified as well as our Genuine Parts
Center in Kaltenkirchen.

ISO 9001
ISO 14001

Jungheinrich fork lift trucks meet
European safety requirements.



 **JUNGHEINRICH**

The logo features a red upward-pointing arrow integrated into the letter 'J' of the word 'JUNGHEINRICH', which is written in a bold, black, sans-serif font.