

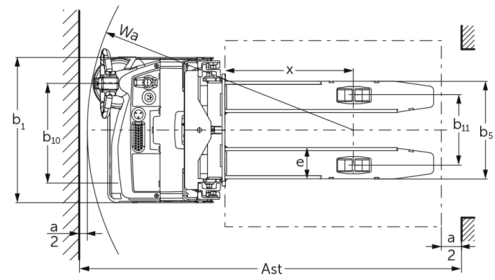
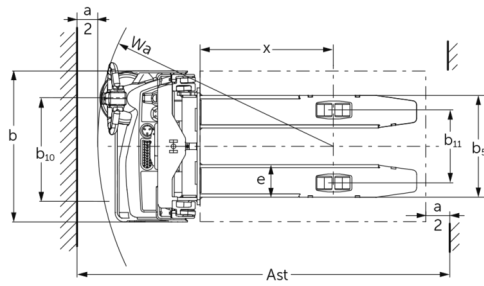
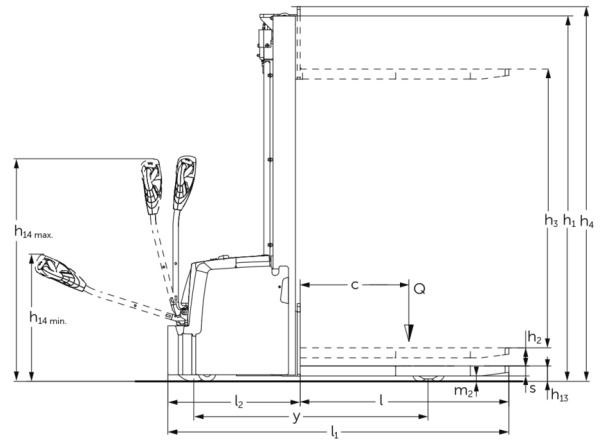
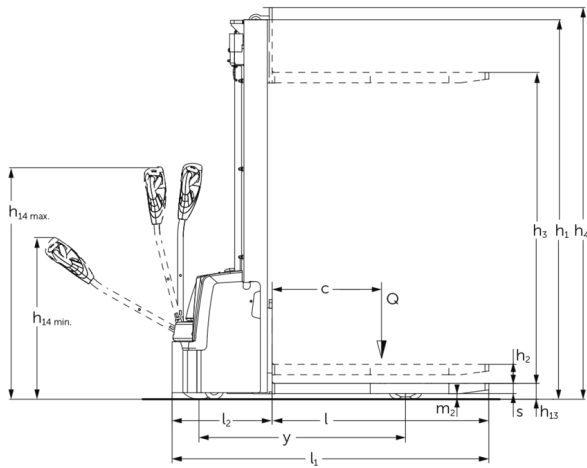


Electric pedestrian stacker **EJC M10 ZT / M13 ZT**

Lift height: 2300-3300 mm / Load capacity: 1000-1300 kg



EJC M10 ZT / M13 ZT



VDI table

Characteristic	1.1	Manufacturer (abbreviated description)		Jungheinrich					
	1.2	Manufacturer's type designation		EJC M10 ZT 2300	EJC M10 ZT 2500	EJC M10 ZT 2900	EJC M10 ZT 3300	EJC M13 ZT 2500	EJC M13 ZT 3300
	1.3	Drive		Electric					
	1.4	Operation		Pedestrian					
	1.5	Load capacity/load	Q kg	1000				1300	
	1.6	Load centre distance	c mm	600					
	1.8	Load distance, centre of drive axle to fork	x mm	710					
	1.9	Wheelbase	y mm	1098				1296	
	Weights	2.1.1	Service weight (incl. battery)	kg	551	560	578	596	704
2.2		Axle load laden front/rear	kg	468 / 1083	474 / 1086	486 / 1092	498 / 1098	566 / 1438	590 / 1450
2.3		Axle load unladen front/rear	kg	405 / 146	411 / 149	423 / 155	435 / 161	471 / 233	495 / 245
Wheels/suspension system	3.1	Tyres		Polyurethane (PU)					
	3.2	Tyre size, front		Ø210x70					
	3.3	Tyre size, rear		Ø80x70					
	3.4	Additional wheels		Ø100x50					
	3.5	Wheels, number front/back (x=driven)		1x+1/4					
	3.6	Tread width, front	b10 mm	550					
	3.7	Tread width, rear	b11 mm	390					
Basic dimensions	4.2	Retracted mast height (h1)	h1 mm	1615	1715	1915	2115	1715	2115
	4.3	Free lift (h2)	h2 mm	100					
	4.4	Lift (h3)	h3 mm	2300	2500	2900	3300	2500	3300
	4.5	Extended mast height (h4)	h4 mm	2730	2930	3330	3730	2930	3730
	4.9	Height of tiller handle in drive position min./max.	h14 mm	800 / 1240					
	4.15	Height, lowered	h13 mm	85					
	4.19	total length	l1 mm	1685				1880	
	4.20	Length including fork shank	l2 mm	535				728	
	4.21.1	total width	b1 mm	800					
	4.22	Fork dimensions	s/ e/l mm	55 x 172 x 1150					
	4.25	Width across forks	b5 mm	540					
	4.32	Ground clearance centre of wheelbase	m2 mm	30					
	4.34.1	Aisle width (pallet 1000x1200 sideways)	Ast mm	2136				2330	
	4.34.2	Aisle width (pallet 800x1200 length)	Ast mm	2103				2297	
4.35	Turning radius	Wa mm	1270						

Performance data	5.1	Travel speed laden/unladen	km/h	5 / 5	
	5.2	Lift speed laden/unladen	m/s	0.12 / 0.22	
	5.3	Lowering speed laden/unladen	m/s	0.15 / 0.13	
	5.8	Max. gradeability laden/unladen	%	6 / 16	
	5.10	Service brake		electric	
E-motor/Electronics	6.1	Drive motor, performance S2 60 min	kW	1	
	6.2	Lift motor, performance with S3	kW	2.2	
	6.3	Battery according to DIN 43531/35/36		no	
	6.4	Battery voltage/nominal capacity	V / Ah	24 / 50	24 / 100
	6.5	Battery weight	kg	15	30
	6.6	Energy consumption according to VDI cycle	kWh/h	0.54	0.58
	6.6.1	Energy consumption according to EN cycle	kWh/h	0.47	0.57
	6.6.2	CO2 equivalent as per EN 16796	kg/h	0.3	
Other	8.1	Type of drive control		BLDC brushless direct current	
	10.7	Sound level as per EN12053, operator's ear	dB (A)	63	
- This data sheet according to VDI guideline 2198 only states the technical values of the standard truck. Different tyres, other masts, additional equipment etc. may result in different values.					

The German production facilities in
Norderstedt, Moosburg and Landsberg
are certified as well as our Genuine Parts
Center in Kaltenkirchen. ISO 9001
ISO 14001

**JUNGHEINRICH**