



Electric pedestrian pallet truck

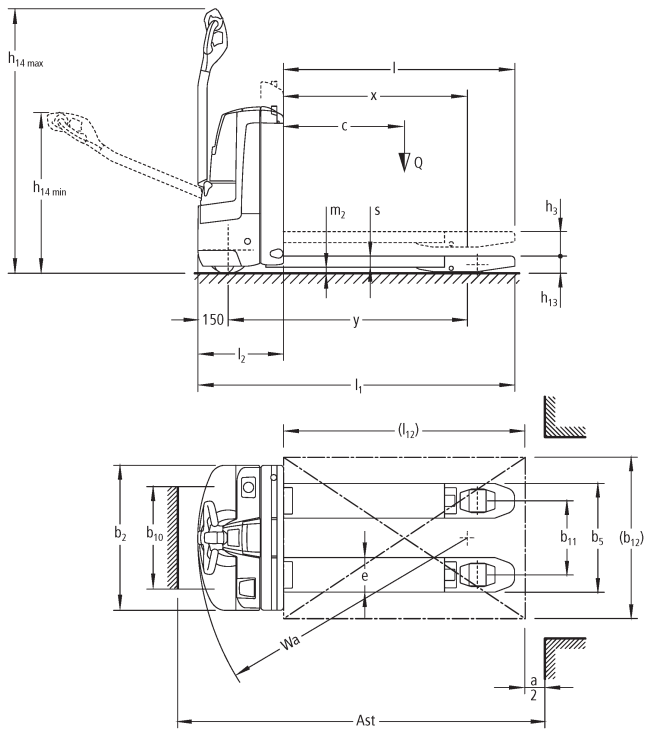
EJE 114i-118i

Lift height: 122 mm / Load capacity: 1400-1800 kg

LI-ION
technology

JUNGHEINRICH

EJE 114i-118i



VDI table

Characteristic	1.1	Manufacturer (abbreviated description)		Jungheinrich		
	1.2	Manufacturer's type designation		EJE 1i		
	1.3	Drive		Electric		
	1.4	Operation		Pedestrian		
	1.5	Load capacity/load	Q kg	1400	1600	1800
	1.6	Load centre distance	c mm	600		
	1.8	Load distance, centre of drive axle to fork	x mm	908		
	1.9	Wheelbase	y mm	1182		
	Weights	2.1.1	Service weight (incl. battery)	kg	280	
2.2		Axle load laden front/rear	kg	560 / 1120	600 / 1280	660 / 1420
2.3		Axle load unladen front/rear	kg	220 / 60		
Wheels/suspension system	3.1	Tyres		Polyurethane (PU)		
	3.2	Tyre size, front		Ø 230 x 70		
	3.3	Tyre size, rear		Ø 85 x 95 / 82 x 70 / 82 x 35		
	3.4	Additional wheels		Ø 100 x 40		
	3.5	Wheels, number front/back (x=driven)		1x +2/2 oder 4		
	3.6	Tread width, front	b10 mm	510		
	3.7	Tread width, rear	b11 mm	363		
Basic dimensions	4.4	Lift (h3)	h3 mm	122		
	4.9	Height of tiller handle in drive position min./max.	h14 mm	750 / 1237		
	4.15	Height, lowered	h13 mm	85		
	4.19	total length	l1 mm	1566		
	4.20	Length including fork shank	l2 mm	416		
	4.21.1	total width	b1 mm	720		
	4.22	Fork dimensions	s/e/ l mm	55 x 150 x 1150		
	4.25	Width across forks	b5 mm	513		
	4.32	Ground clearance centre of wheelbase	m2 mm	30		
	4.34.1	Aisle width (pallet 1000x1200 sideways)	Ast mm	2170		
	4.34.2	Aisle width (pallet 800x1200 length)	Ast mm	2058		
4.35	Turning radius	Wa mm	1363			
Performance data	5.1	Travel speed laden/unladen	km/h	5 / 5	6 / 6	
	5.2	Lift speed laden/unladen	m/s	0.03 / 0.03	0.04 / 0.04	
	5.3	Lowering speed laden/unladen	m/s	0.05 / 0.04		
	5.8	Max. gradeability laden/unladen	%	8 / 20		6 / 20
	5.10	Service brake		generative		

E-motor/Electronics	6.1	Drive motor, performance S2 60 min	kW	0.9	1.1	
	6.2	Lift motor, performance with S3	kW	1.2		
	6.3	Battery according to DIN 43531/35/36		B		
	6.4	Battery voltage/nominal capacity	V / Ah	25.7 / 40		
	6.5	Battery weight	kg	15		
	6.6	Energy consumption according to VDI cycle	kWh/h	0		
	6.6.1	Energy consumption according to EN cycle	kWh/h	0.32	0.31	0.29
	6.6.2	CO2 equivalent as per EN 16796	kg/h	0.2		
	6.7	Throughput	t/h	67	93	110
	6.8.1	Energy consumption with max. throughput	kWh/h	0.49	0.66	0.59
Other	8.1	Type of drive control		AC		
	10.7	Sound level as per EN12053, operator's ear	dB (A)	61		
<p>- This data sheet according to VDI guideline 2198 only states the technical values of the standard truck. Different tyres, other masts, additional equipment etc. may result in different values.</p>						

- VDI no. 10.7: for EJE 116i with silentDRIVE option: 57 dB(A).

The German production facilities in
Norderstedt, Moosburg and Landsberg ISO 9001
are certified as well as our Genuine Parts ISO 14001
Center in Kaltenkirchen.

**JUNGHEINRICH**