

TP / 10 / 13 May 2025

## **Jungheinrich realises automated central warehouse for Wicke GmbH + Co. KG**

- **High-bay warehouse in silo design with 22,596 pallet spaces for finished and semi-finished parts**
- **Connection of existing and new production buildings for optimised logistics processes**
- **Comprehensive Jungheinrich solution from a single source with racking and conveyor technology, stacker cranes and WMS**

**Jungheinrich is realising a state-of-the-art automated central warehouse for Wicke GmbH + Co KG in Sprockhövel, Germany. The comprehensive solution optimises production supply and increases the efficiency of internal logistics processes.**

Hamburg – Jungheinrich has received an order from Wicke GmbH + Co KG to realise an automated central warehouse in Sprockhövel, Germany. With a significant investment, the internationally active manufacturer of industrial wheels, tyres and axles is relying on a state-of-the-art warehouse infrastructure to support its continuous growth. The new high-bay warehouse in silo design will significantly optimise material handling processes and improve the material flow of finished and semi-finished parts between warehouse and production.

### **Automated efficiency on multiple levels**

The new central warehouse covers an area of more than 3,500 square metres and, with a height of 25.5 metres, is the size of an eight-storey tower block. It is complemented by a handling building with integrated social and office areas, in which incoming goods, outgoing goods, picking and packing processes are carried out on two levels. With a system capacity of 150 double cycles per hour, the warehouse offers a high throughput capacity for two-shift

Seite 1 von 5

**Jungheinrich Aktiengesellschaft**  
Friedrich-Ebert-Damm 129 · 22047 Hamburg · Phone +49 40 6948-0 · Fax +49 40 6948-1777 · [info@jungheinrich.de](mailto:info@jungheinrich.de) · [www.jungheinrich.com](http://www.jungheinrich.com)

**Chairman of the Supervisory Board** Rolf Najork  
**Board of Management** Dr Lars Brzoska, Chairman · Nadine Despineux · Dr Volker Hues · Maik Manthey · Heike Wulff  
**Company headquarters** Hamburg · **Register court** Hamburg HRB 44 885  
**Bank account** Commerzbank AG Hamburg (BIC: COBADEFFXXX) IBAN: DE57 2004 0000 0630 7300 00; (BLZ 200 400 00) 6 307 300  
Deutsche Bank AG Hamburg (BIC: DEUTDEHHXXX) IBAN: DE96 2007 0000 0042 9977 00; (BLZ 200 700 00) 0 429 977

operation. Existing production buildings will be directly connected to the new warehouse in order to minimise transport routes and optimise material flows. In a second construction phase, the connection of a further production building is also planned. "With the automation of this central warehouse, we are creating a powerful, future-proof solution for Wicke that not only increases efficiency but also significantly contributes to the company's competitiveness," emphasises Nadine Despineux, Jungheinrich's Sales Director. "This project underscores the strategic importance of automated logistics solutions for modern, scalable, and sustainable production supply."

### **Comprehensive solution from a single source**

Jungheinrich is supplying seven stacker cranes for double-deep pallet storage, complete pallet conveyor technology including PLC and visualisation, the silo racking with roof and wall cladding, as well as sprinkler systems and fire doors. Additionally, Jungheinrich is integrating its Warehouse Management System (WMS) to optimally control all warehouse and material flow processes.

With this comprehensive automation solution from a single source, Jungheinrich confirms its role as a strategic partner for Wicke. As a long-standing supplier of high-quality wheels and castors for Jungheinrich industrial trucks, Wicke now benefits from the material handling expertise of the Hamburg-based company. The close cooperation between the two companies results in a state-of-the-art material handling solution that optimally combines efficiency, sustainability, and future security.

The completion of the new central warehouse is planned for June 2027.

**If you have any queries, please contact:**

Dr Benedikt Nufer, spokesman

Tel.: +49 40 6948 3489

Mobile: +49 151 2779 1245

[benedikt.nufer@jungheinrich.de](mailto:benedikt.nufer@jungheinrich.de)

**About Jungheinrich:**

As one of the world's leading providers of material handling solutions, Jungheinrich has been advancing the development of innovative and sustainable products and solutions for material flows for more than 70 years. As a pioneer in the sector, the family-owned listed business is committed to creating the warehouse of the future. In the 2024 financial year, Jungheinrich and its workforce of around 21,000 employees generated revenue of €5.4 billion. The global network comprises 12 production plants and service and sales companies in 42 countries. The share is listed on the MDAX.

**About Wicke GmbH + Co. KG:**

Wicke GmbH + Co KG, based in Sprockhövel, is a manufacturer of industrial wheels, tyres, axles, swivel castors and fixed castors. As a supplier to Jungheinrich, the company makes a significant contribution to the quality and performance of modern material handling solutions. Founded in 1866, the company employs around 1,000 people and has an annual turnover of around 200 million euros. In addition to its headquarters in Germany, Wicke has further production sites in the Czech Republic and China.



Image 1: The contract was personally sealed with a handshake at the Jungheinrich stand at LogiMAT in Stuttgart (Germany). It was officially signed in April. From left to right: Wicke Vice President Sales Roger-Matthias Brendt, Jungheinrich Member of the Board of Management for Technology Maik Manthey, Wicke Partner and Member of the Board of Management for Research and Development Philip Schlösser, Jungheinrich Member of the Board of Management for Sales Nadine Despineux, both Wicke Partners and Member of the Board of Management Stephan Schlösser and Christian Schrape.

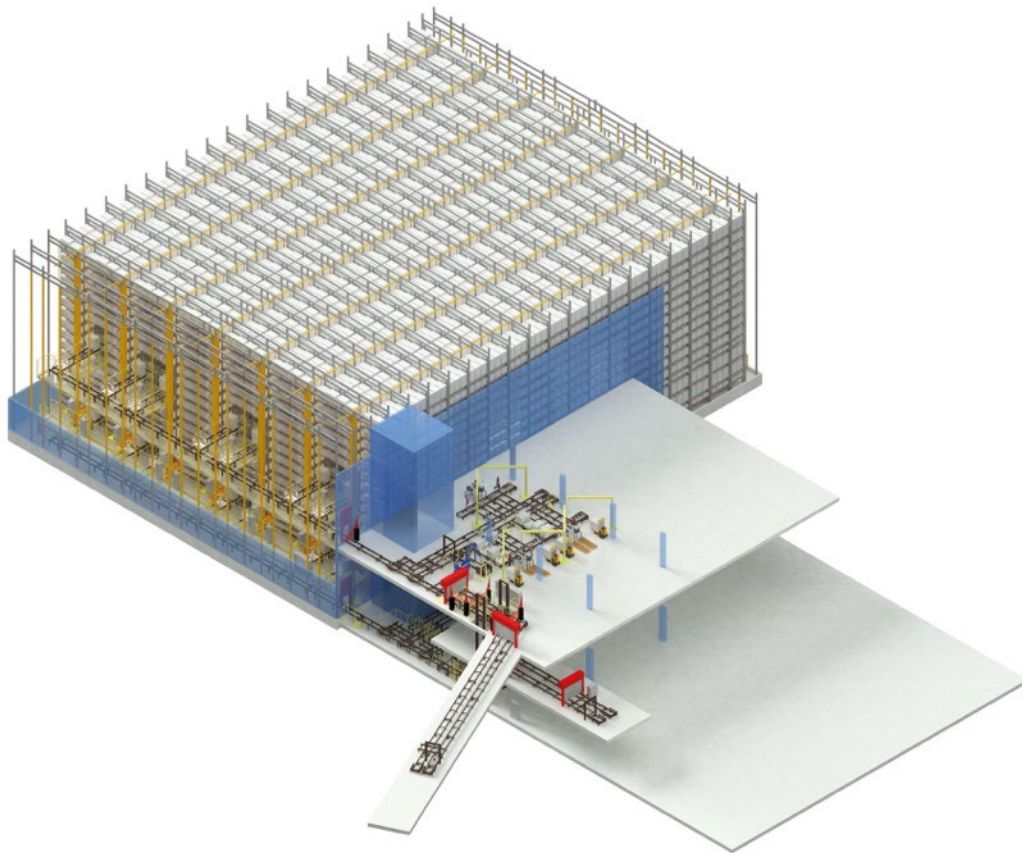


Image 2: For Wicke GmbH + Co KG, Jungheinrich is realising an automated high-bay warehouse on two levels in silo design with 22,596 pallet spaces for finished and semi-finished parts.