



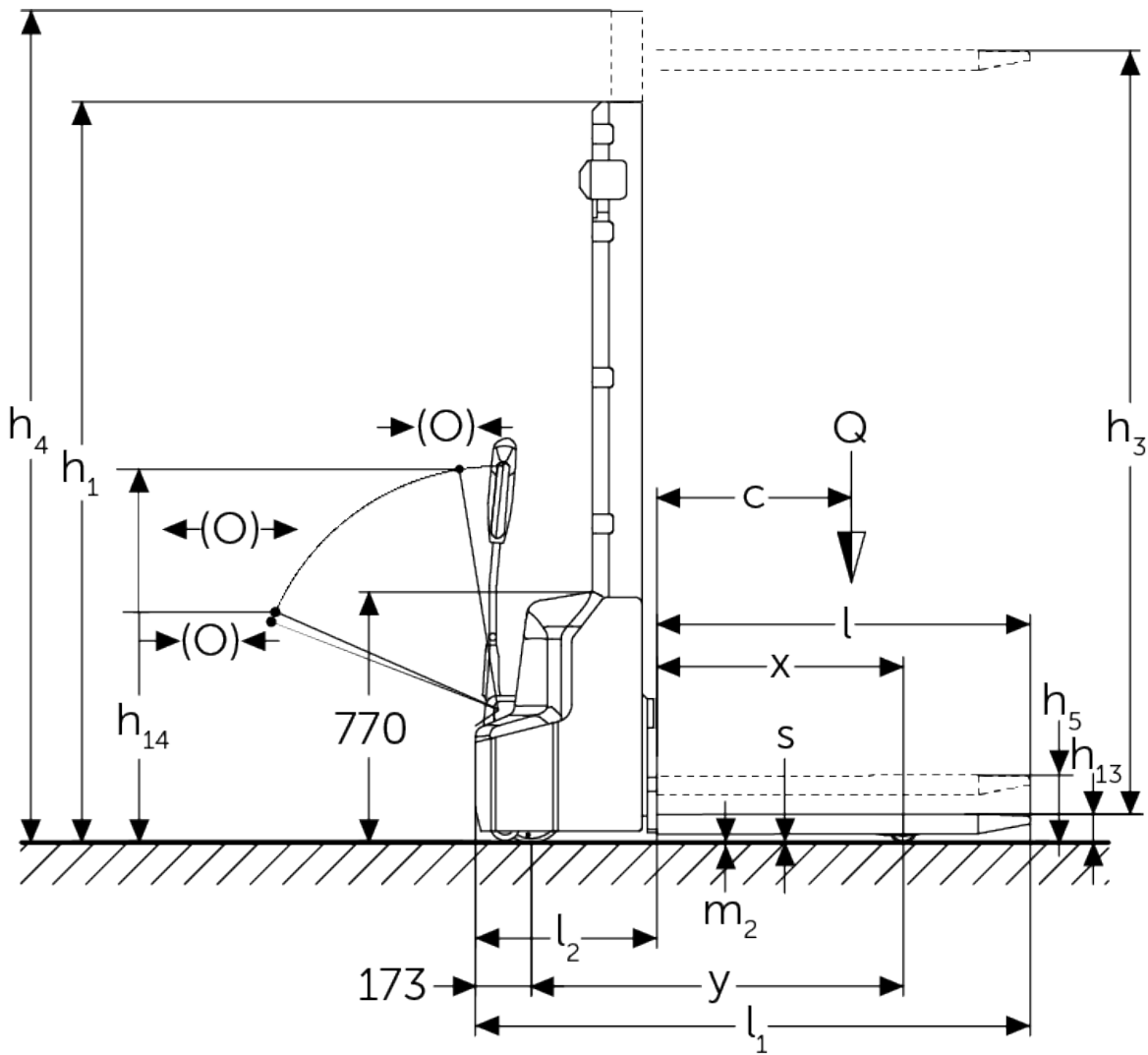
## Electric pedestrian stacker

**AMC 12z**

Lift height: 2814-3514 mm / Load capacity: 1200 kg



# AMC 12z



## VDI table

				Other (OEM)	
				AMC 12z (280 ZT)	AMC 12z (350 ZT)
Characteristic	1.1	Manufacturer (abbreviated description)			
	1.2	Manufacturer's type designation			
	1.3	Drive type		electric	
	1.4	Operation		Pedestrian	
	1.5	Load capacity/load	Q kg	1200	
	1.5.1	Rated capacity/load with mast lift	Q kg	1200	
	1.5.2	Rated capacity/load with support arm lift	Q kg	1200	
	1.6	Load centre distance	c mm	600	
	1.8	Load distance, centre of drive axle to fork	x mm	752	
1.9	Wheelbase	y mm	1181		
Weights	2.1.1	Service weight (incl. battery)	kg	640	670
	2.2	Axle load laden front/rear	kg	670 / 1200	
	2.3	Axle load unladen front/rear	kg	485 / 185	
Wheels/chassis	3.4	Additional wheels		100x50	
	3.6	Tread width, front	b10 mm	550	
Basic dimensions	4.2	Retracted mast height (h1)	h1 mm	1970	2320
	4.4	Lift (h3)	h3 mm	2814	3514
	4.5	Extended mast height (h4)	h4 mm	3377	4077
	4.6	Initial lift	h5 mm	120	
	4.9	Height of tiller handle in drive position min./max.	h14 mm	710 / 1150	
	4.15	Height, lowered	h13 mm	86	
	4.19	Total length	l1 mm	1752	
	4.20	Length including fork shank	l2 mm	602	
	4.21.1	total width	b1 mm	800	
	4.22	Fork dimensions	s/e/l mm	60 x 180 x 1150	
	4.25	Width across forks	b5 mm	570	
	4.32	Ground clearance centre of wheelbase	m2 mm	24	
	4.34.1	Aisle width (pallet 1000x1200 sideways)	Ast mm	2234	
4.34.2	Aisle width (pallet 800x1200 length)	Ast mm	2185		
4.35	Turning radius	Wa mm	1384		
Performance data	5.1	Travel speed laden/unladen	km/h	4.2 / 4.5	
	5.2	Lift speed laden/unladen	m/s	0.11 / 0.16	
	5.3	Lowering speed laden/unladen	m/s	0.13 / 0.11	
	5.7	Gradeability laden/unladen	%	5 / 10	
	5.10	Service brake		electromagnetic	

Electric motor/electronics	6.1	Drive motor, performance S2 60 min	kW	0.65
	6.2	Lift motor, performance with S3	kW	2.2
	6.3	Battery according to DIN 43531/35/36		no
	6.4	Battery voltage/nominal capacity	V / Ah	24 / 60
	6.5	Battery weight	kg	17
	6.6	Energy consumption according to VDI cycle	kWh/h	0.66
Other	8.1	Type of drive control		Impulse/DC
	10.7	Sound pressure level according to EN12053	dB (A)	70

- This data sheet according to VDI guideline 2198 only states the technical values of the standard truck. Different tyres, other masts, additional equipment etc. may result in different values.

The German production facilities in  
Norderstedt, Moosburg and Landsberg are  
certified as well as our Genuine Parts  
Center in Kaltenkirchen.

ISO 9001  
ISO 14001

Jungheinrich fork lift trucks meet European  
safety requirements.



 **JUNGHEINRICH**

The Jungheinrich logo, featuring a red upward-pointing arrow above the word 'JUNGHEINRICH' in a bold, black, sans-serif font.